



**John Hall & Company**  
Commercial / Investment Property / Land  
[www.JohnHallCo.com](http://www.JohnHallCo.com)

## **FOR SALE**

### **O'Ferrell Rebar**

### **Lowndes County**



**ADDRESS:** 6362 U.S. Hwy 80, Hope Hull Alabama, 36043

**SALE PRICE:** \$375,000 **PRICE REDUCED!!**

**BUILDING SIZE:** 20,893 SF

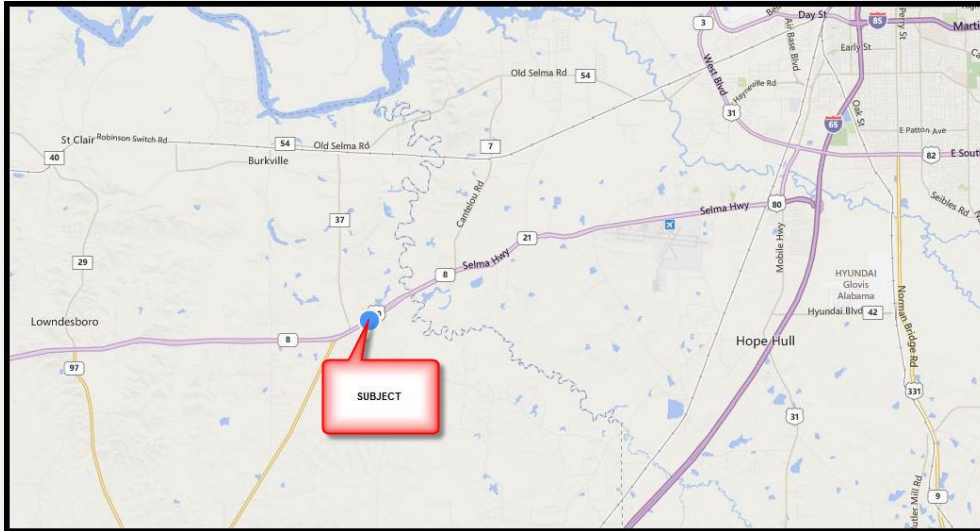
**YEAR BUILT:** 1986

**LOT SIZE:** 6.05 acres

**ZONING:** None

**CURRENT USE:** Business, light industrial, fabrication

This company, or any of its agents, will not be held responsible for any false or misleading information. Information is collected by agents from sources that agent deems reliable. Agent has used his best efforts and good faith to obtain reliable information.



## CHARACTERISTICS:

- 2 separate fabrication buildings (16,993 SF)
- 30 foot eave height in main building
- 2 material storage sheds attached to main building (11,770 SF)
- Six 5 ton cranes and spans on rails
- Brick office building with several offices, lobby, break room and restrooms (3,450 SF)

This is a great property for assembly, fabrication or contractor with large land to building ratio. Two access points on US Highway 80 with a median cut. Close to Montgomery Regional Airport, Hyundai Plant and Hyundai Suppliers. The estimated replacement cost is over \$1,000,000.

This company, or any of its agents, will not be held responsible for any false or misleading information. Information is collected by agents from sources that agent deems reliable. Agent has used his best efforts and good faith to obtain reliable information.



**John Hall & Company**  
Commercial / Investment Property / Land  
[www.JohnHallCo.com](http://www.JohnHallCo.com)



**This company, or any of its agents, will not be held responsible for any false or misleading information. Information is collected by agents from sources that agent deems reliable. Agent has used his best efforts and good faith to obtain reliable information.**





**John Hall & Company**  
Commercial / Investment Property / Land  
[www.JohnHallCo.com](http://www.JohnHallCo.com)



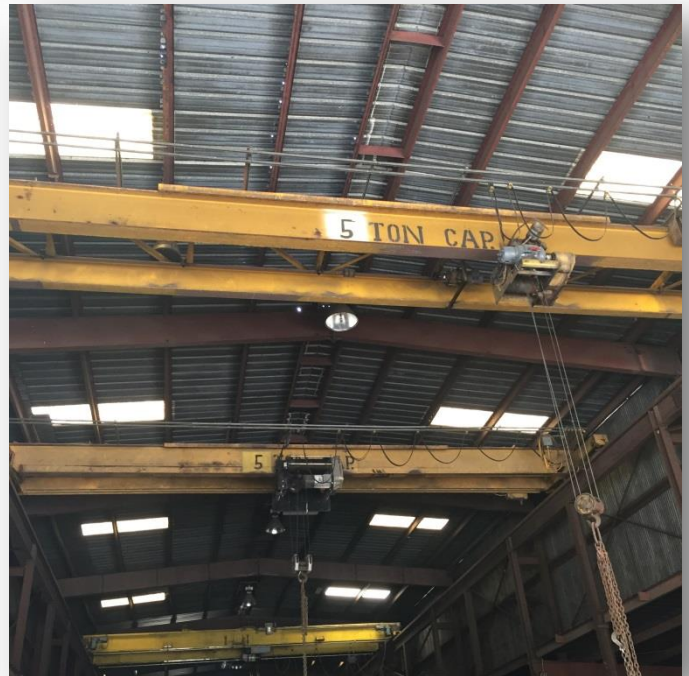
**This company, or any of its agents, will not be held responsible for any false or misleading information. Information is collected by agents from sources that agent deems reliable. Agent has used his best efforts and good faith to obtain reliable information.**

**4163 CARMICHAEL ROAD | MONTGOMERY, ALABAMA 36106 | (334) 270-8400**  
[www.JohnHallCo.com](http://www.JohnHallCo.com)





**John Hall & Company**  
Commercial / Investment Property / Land  
[www.JohnHallCo.com](http://www.JohnHallCo.com)



**This company, or any of its agents, will not be held responsible for any false or misleading information. Information is collected by agents from sources that agent deems reliable. Agent has used his best efforts and good faith to obtain reliable information.**

**4163 CARMICHAEL ROAD | MONTGOMERY, ALABAMA 36106 | (334) 270-8400**  
[www.JohnHallCo.com](http://www.JohnHallCo.com)