



# John Hall & Company

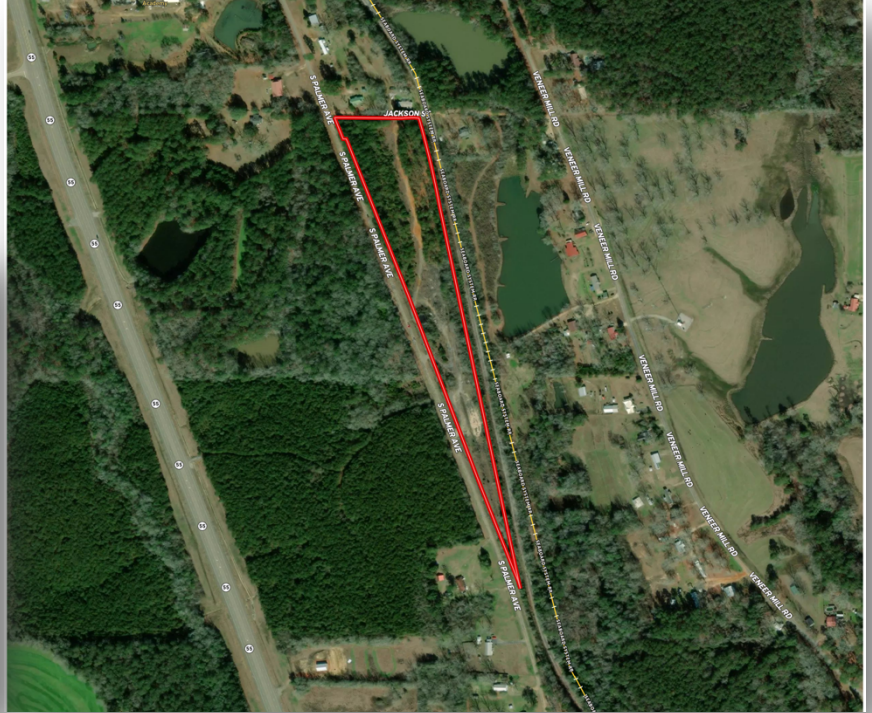
Land | Commercial | Investment Property  
[www.JohnHallCo.com](http://www.JohnHallCo.com)

Hoke Smith  
334.322.2683

[hoke@johnhallco.com](mailto:hoke@johnhallco.com)

## Georgiana Railyard

13 +/- acres  
Georgiana, AL



**LOCATION:** S. Palmer Avenue & Jackson Street. Georgiana, AL 36033

**TERRAIN:** Level

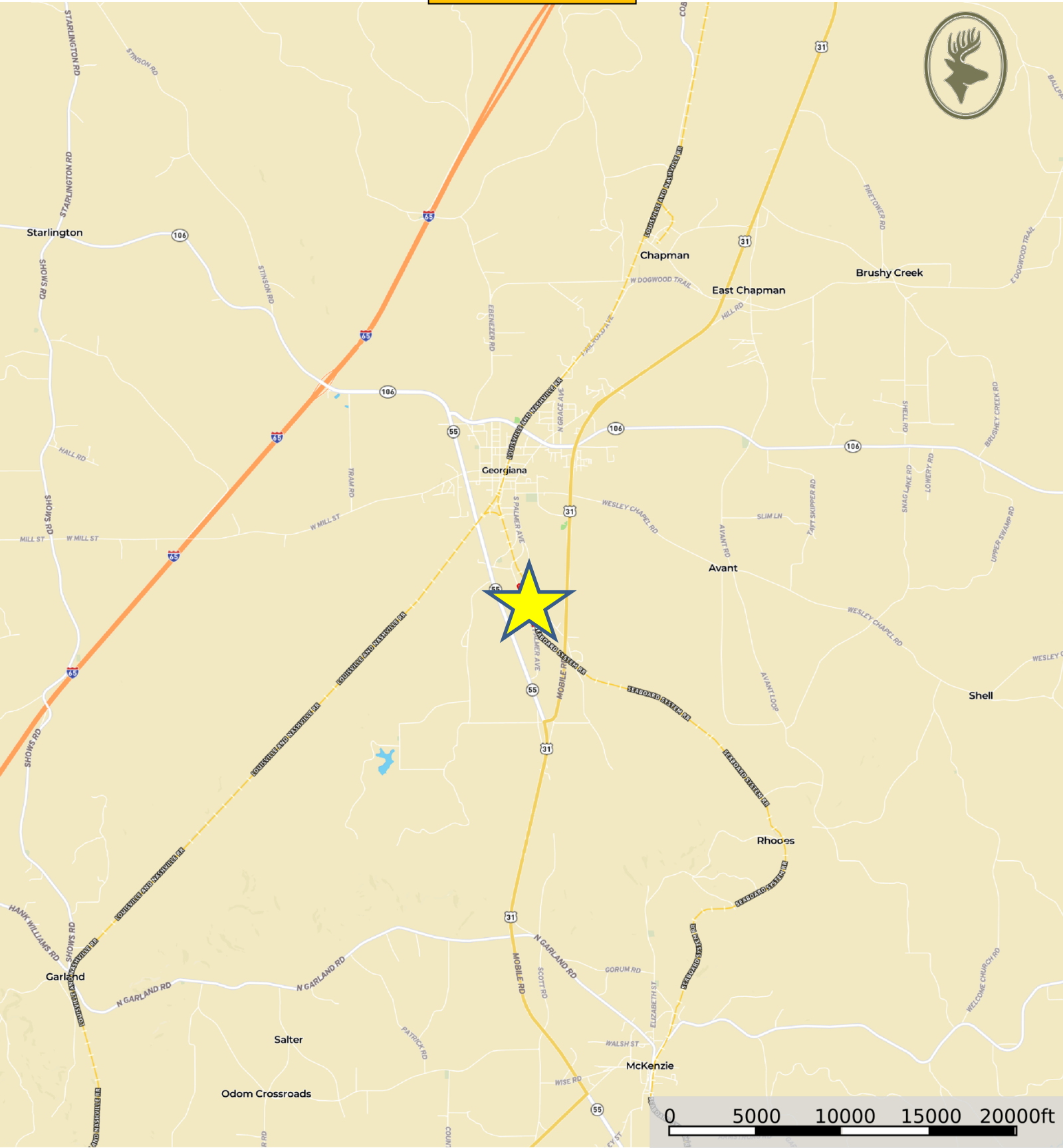
**LAND USE:** Commercial / Business in need of Railroad spur

**PRICE:** \$139,000

**SPECIAL FEATURES:** This property is located on the south side of Georgiana, AL on S. Palmer Ave and is less than 0.5 miles from State Hwy 55 and U.S. Hwy 31. Interstate I-65 is 4 miles away from the property. In the past this property has been used as a woodyard for a timber company. Wood was brought to the property weighed at the weigh station (which is still on the property) then loaded onto railroad transportation for shipping. There is an existing rail spur that connects to the adjoining short line railroad connecting Georgiana to Andalusia. In Georgiana this rail line connects to CSX Rail line. This rail spur provides a great opportunity for transportation savings in a business where goods need to be shipped long distances. Utilities are available at this property. The property is just under an hour from Montgomery, AL. It is 1 hour and 30 minutes to Mobile, AL and 20 minutes to Greenville, AL. There are tons of different possibilities and opportunity this property could provide. Give me a call for more information or to schedule a showing!

This company, or any of its agents, will not be held responsible for any false or misleading information. Information is collected by agents from sources that agent deems reliable. Agent has used his best efforts and good faith to obtain reliable information.

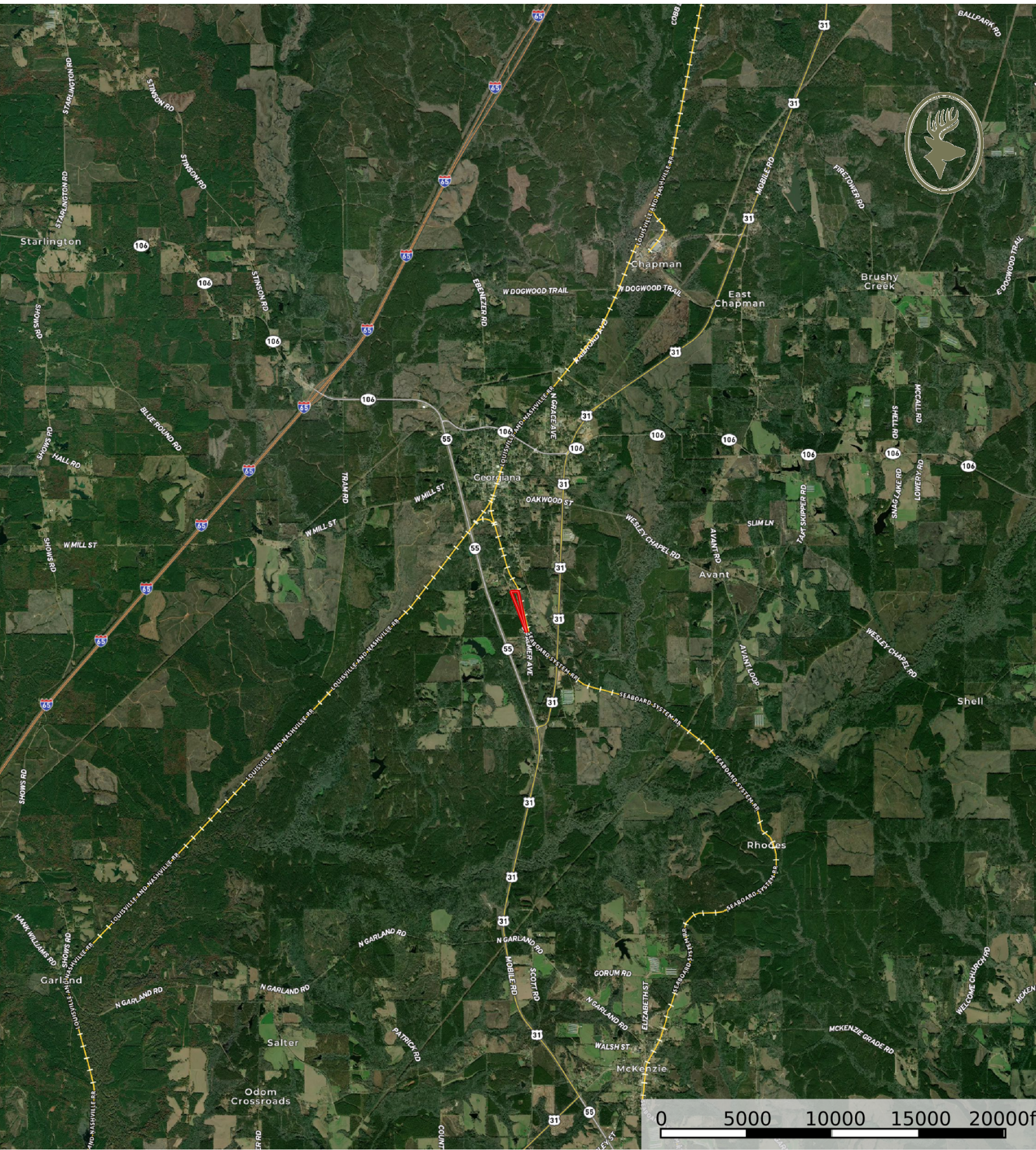
Property Location











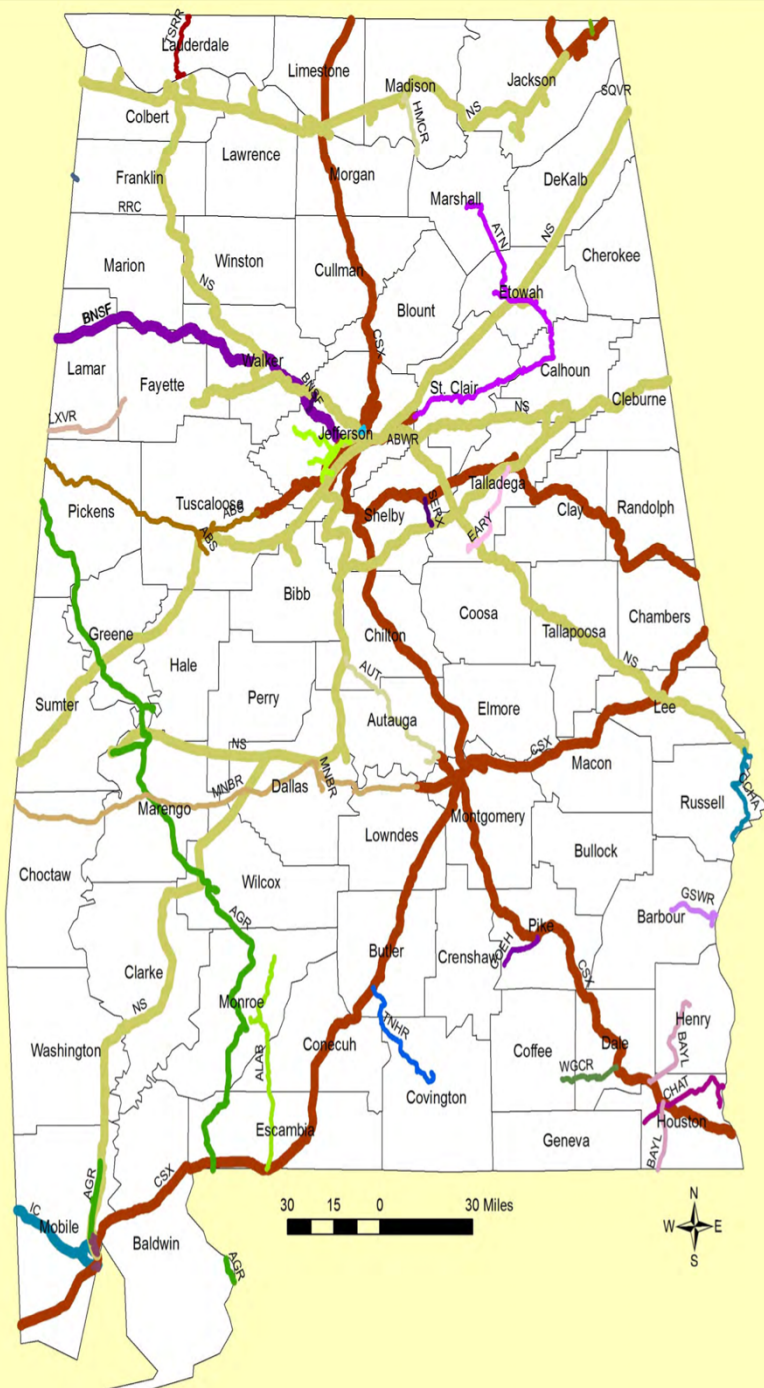












### RAILROAD: CLASS III

- Alabama & Tennessee Railway, LLC (ATN)
- Alabama Railroad Co (ALAB)
- Alabama Southern Railroad (ABS)
- Alabama Warrior Railway (ABWR)
- Autauga Northern Railroad, LLC (AUT)
- The Bay Line Railroad, LLC (BAYL)
- Birmingham Terminal Railway (BHRR)
- Central Gulf Railway, Inc (CGR)
- Chattahoochee Bay Railroad, Inc (CHAT)
- Columbus & Chattahoochee Railroad, Inc. (CCHA)
- Conecuh Valley Railway, LLC (COEH)
- Eastern Alabama Railway, LLC (EARY)
- Georgia Southwestern Railroad, Inc (GSRW)
- Huntsville & Madison Co RR Auth (HMCR)
- Luxapallila Valley Railroad, Inc (LXVR)
- Meridian & Bigbee Railroad, LLC (MNBR)
- Redmont Railway Co, Inc (RRC)
- Sequatchie Valley Railroad (SQVR)
- Southern Electric Railroad Co, Inc (SERX)
- Tennessee Southern Railroad Co (TSRR)
- Terminal Railway At State Docks (TASD)
- Three Notch Railway, LLC (TNHR)
- Wiregrass Central Railway, LLC (WGCR)

### RAILROAD: CLASS I

- Burlington Northern Santa Fe Ry (BNSF)
- CSX Transportation, Inc (CSX)
- Canadian National Illinois Central (CN/IC)
- Norfolk Southern Corp (NS)

### RAILROAD: CLASS II

- Alabama & Gulf Coast Railroad, LLC (AGR)



Railroads in Alabama: All Classes  
Data Provided by ALDOT  
Date: November 7, 2013