



John Hall & Company

Land | Commercial | Investment Property
www.JohnHallCo.com

Hoke Smith

334.322.2683

hoke@johnhallco.com

The Turner Place

34 +/- acres

Wetumpka, AL

Elmore County



LOCATION: 348 Knight Drive. Wetumpka, AL 36092

TERRAIN: Rolling

ACRES: 34 +/-

LAND USE: Homestead / Recreational / Timber / Hunting / Fishing

PRICE: \$549,000

AGENT: Hoke Smith, 334.322.2683, hoke@johnhallco.com

SPECIAL FEATURES: The "Turner Place" is the scenic and secluded homestead you have been waiting for! This 2,900 sq. ft. ranch style home sits on 34 acres +/- with a large yard. It has 4 bedrooms and 3 bathrooms with a large master bedroom and bathroom. There is great storage space throughout the house and has been kept in excellent condition throughout the years. It overlooks a 1.5 acre +/- pond that is surrounded by large oak trees that stage beautiful early morning and late afternoon views from the back porch. The property has so much to offer. One would be hard-pressed to find a property multiple times this size that has all the features this 34 acres has. This includes a pond, a year-round creek, an abundant of wildlife, mature hardwood timber, open land for livestock, and access to utilities for additional structures. Keep all your equipment and toys in the 48' x 32' pole barn with plenty of room for tractors, ATV's, UTV's and more! There is also an enclosed portion of the barn with a concrete foundation that one could use as a machine shop or for extra storage. For more information, please contact me today!

This company, or any of its agents, will not be held responsible for any false or misleading information. Information is collected by agents from sources that agent deems reliable. Agent has used his best efforts and good faith to obtain reliable information.

4163 CARMICHAEL ROAD | MONTGOMERY, ALABAMA 36106 | 334.270.8400

www.JohnHallCo.com

Quick Facts

Main Home

- 2,900 sq. ft. total
- 4-bedroom 3 bathroom
- 1,713 sq. ft. built in 1985
- 1,200 sq. ft. addition built in 2005
- 400 sq. ft. garage.
- Hardwood floors
- Brick exterior
- Well insulated
- Large master bathroom
- Large master closet
- Utilities room
- "Mud room" for storage
- Shaded and large back porch with excellent view over pond.

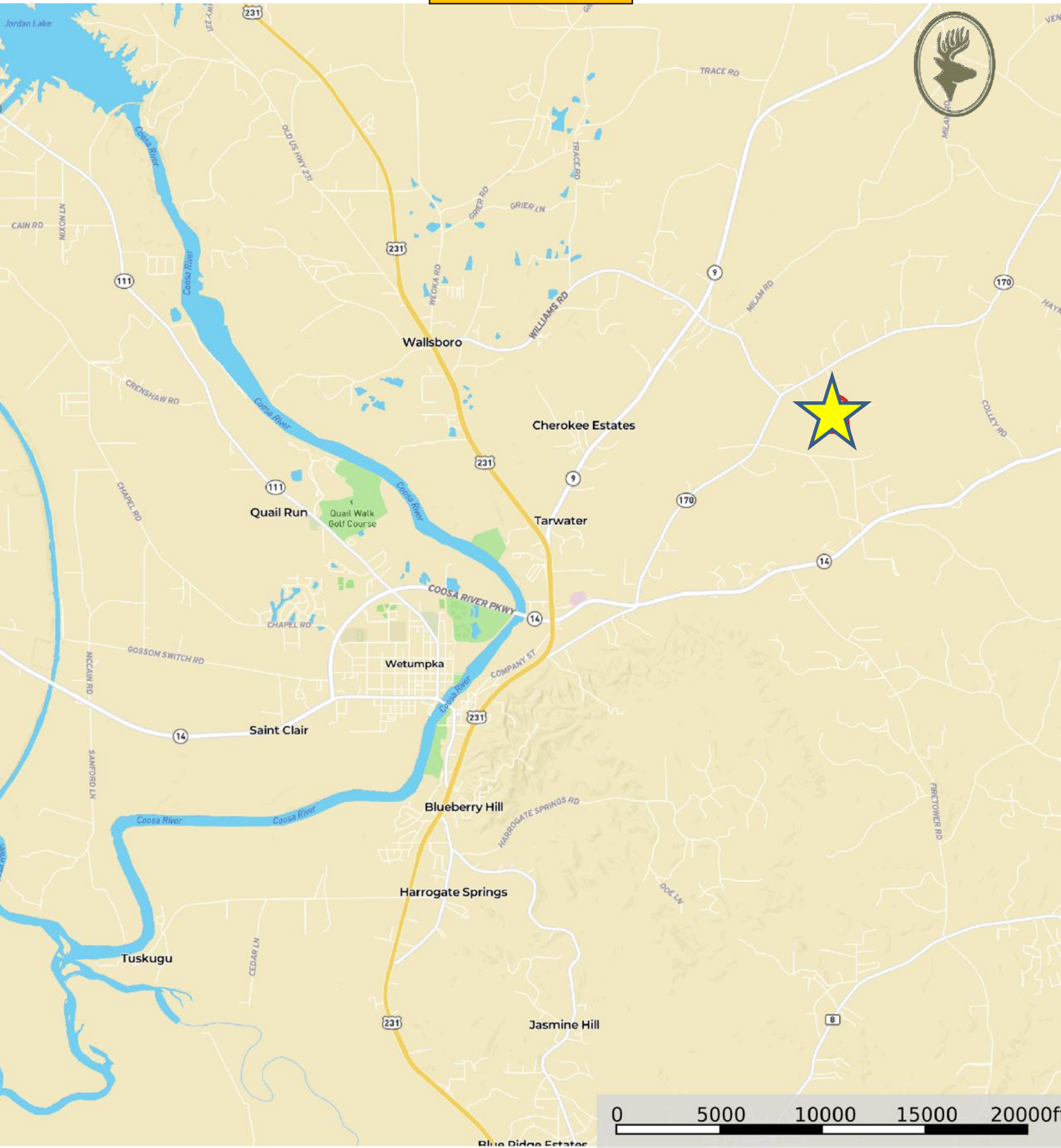
Barn

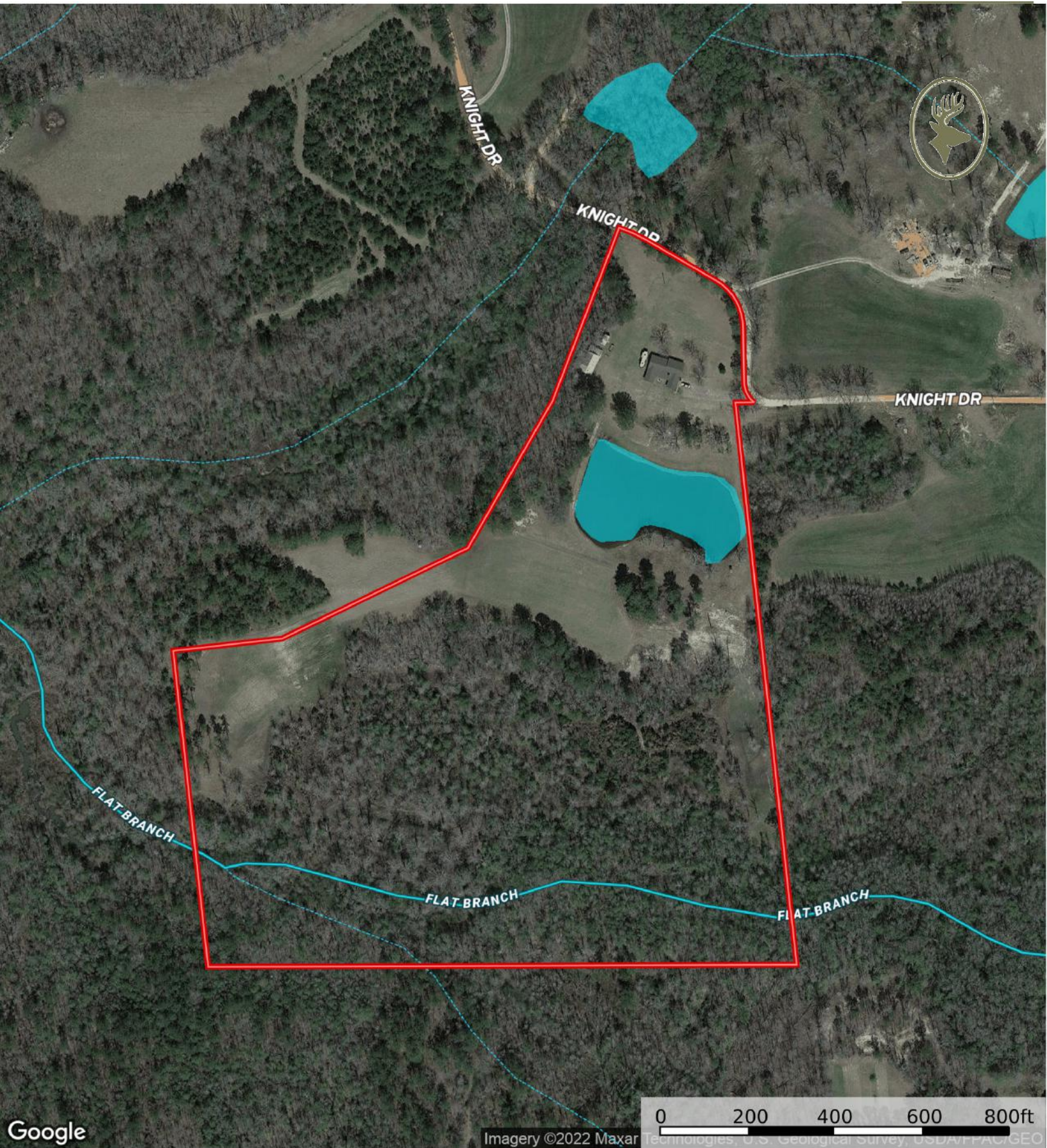
- 48' x 32' open pole barn
- 15' x 32' enclosed with concrete foundation
- Additional storage building beside barn

Land

- 34 acres +/-
- 1.5 acres +/- pond for fishing
- 7 + acres in open land for wildlife food plots, hayfield, pasture, etc.
- Hardwood timber with some pine mixed
- Flat Branch Creek runs through the southern portion of the property
- Great recreational opportunity with an abundant amount of deer & turkey.

Property Location





Google

Imagery ©2022 Maxar Technologies, U.S. Geological Survey, USDA/FAC/GEO

 Boundary  Stream, Intermittent  River/Creek  Water Body

0 200 400 600 800ft

