



John Hall & Company
Commercial / Investment Property / Land
www.JohnHallCo.com

FOR LEASE
Professional Office Space



Location	4732 Woodmere Blvd Montgomery, AL 36106
Space Type:	Shared office space
Space:	1,950 SF Pro Rata share of 3,585 SF
Year Built:	2007
Parking:	43 spaces (4.7 per 1,000)
Price:	\$14.40/SF +/-
Lease Type:	Full Service
Contact:	Josh Hall @ 334-549-2850
Comments:	One side of the office building is available.



Comments:

Professional office building in Central Montgomery. Surrounded by medical practices, banks, real estate companies and other professional offices. Convenient to two interstate exits, Vaughn Road and several schools. Up to 6 professional offices.

Highlights:

Short Term or Long Term Rental Options

Good quality building

Use of nice conference room, break room, work room.

Furniture can be included with a few offices.

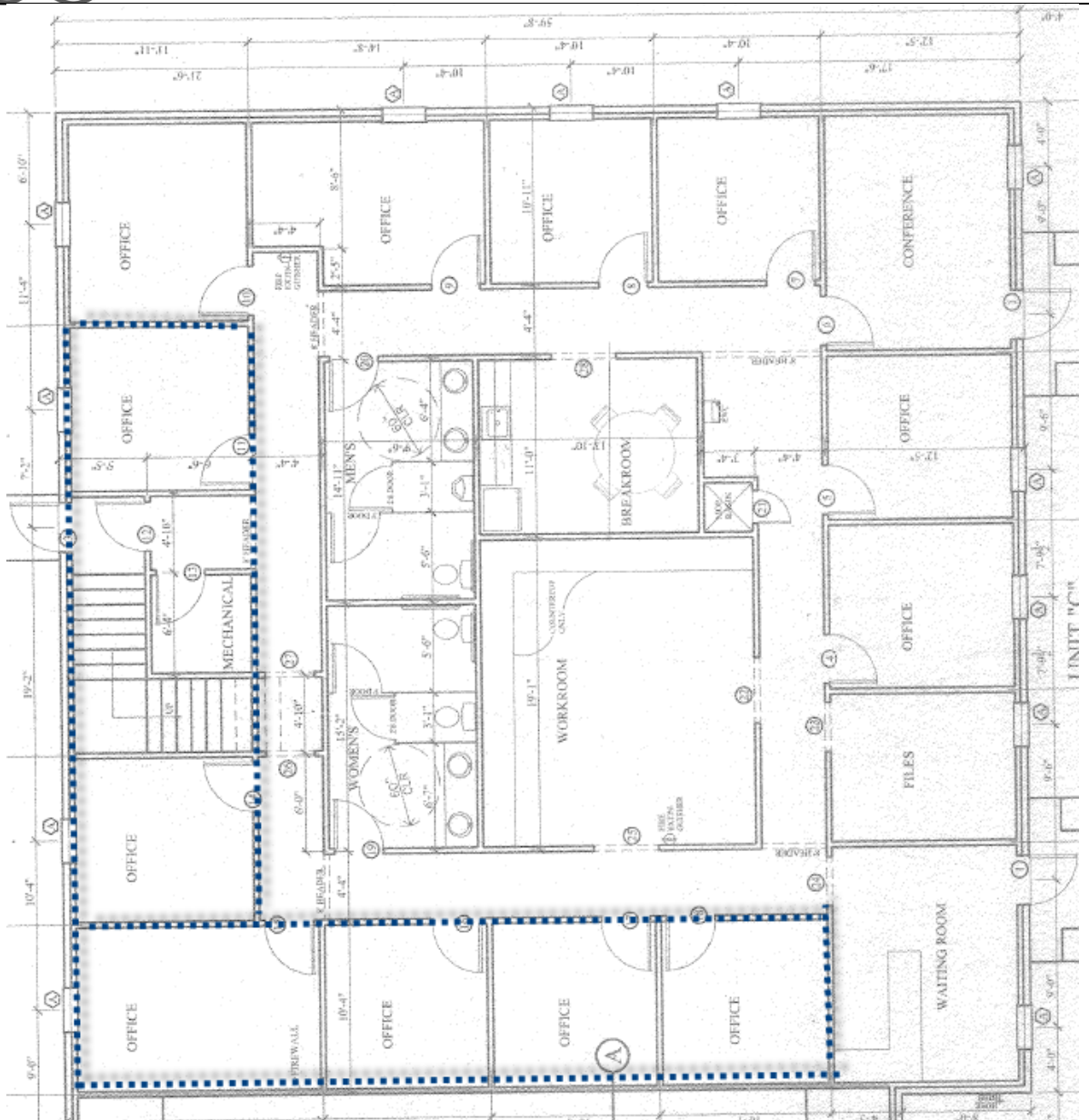
Centrally located in Montgomery with access to major arteries

Landlord Responsibilities:

Taxes, Insurance, Grounds, Utilities, Janitorial Exterior Maintenance, Water

Tenant Responsibilities:

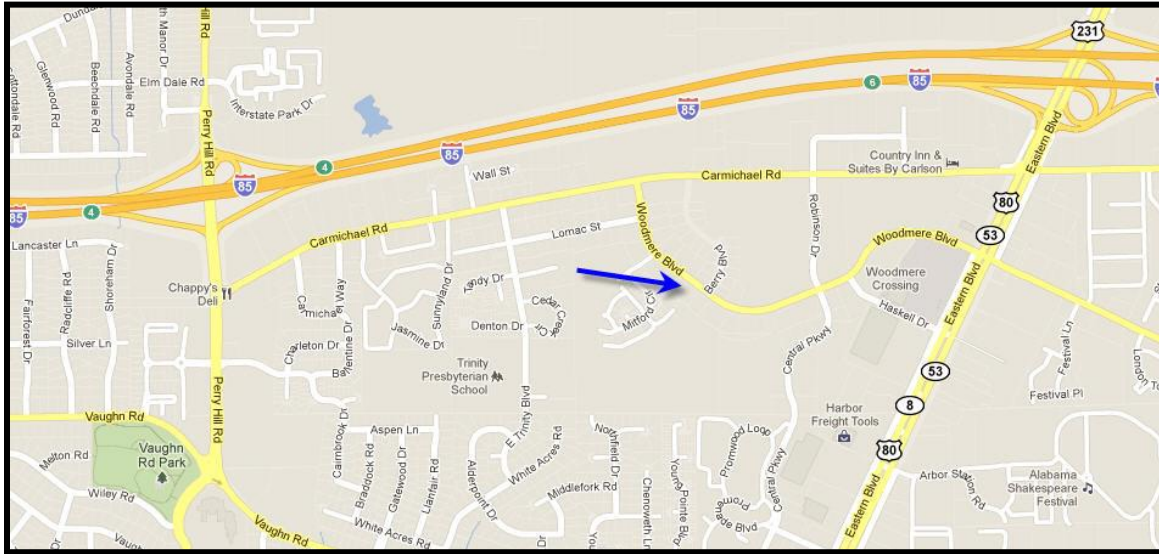
None







John Hall & Company
Commercial / Investment Property / Land
www.JohnHallCo.com



4163 CARMICHAEL ROAD * MONTGOMERY, ALABAMA 36106 * (334) 270-8400 * (800) 864-1281