



# JOHN HALL & COMPANY

LAND • COMMERCIAL • INVESTMENT PROPERTY

WWW.JOHNHALLCO.COM

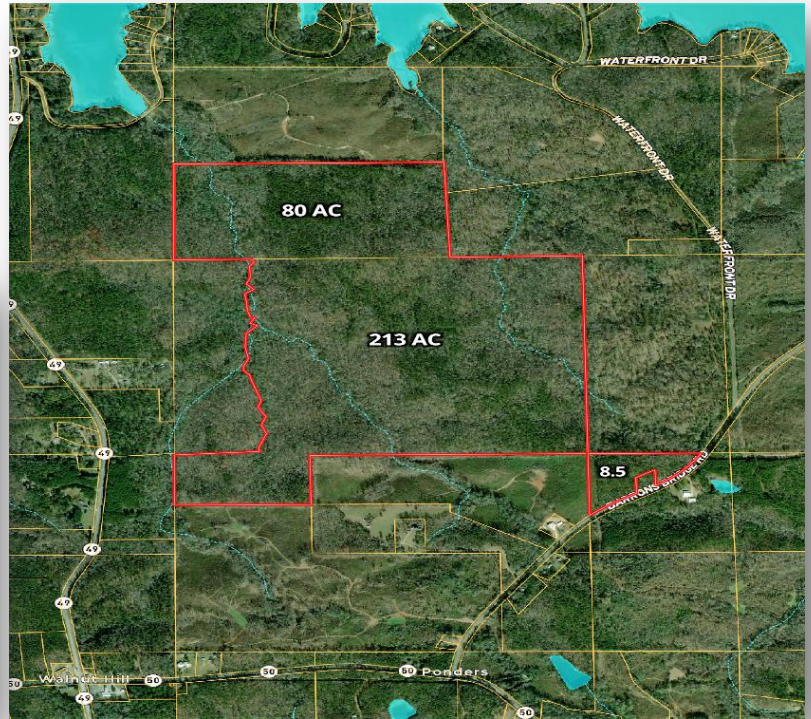
Pete Hall

334.312.7099

pete@johnhallco.com

## Walnut Hill Property

301.5 acres +/-  
Tallapoosa County



**LOCATION:** S Tallapoosa County at Walnut Hill on Baron's Bridge Rd (Just off CR 50) \* Less than 750 ft from lake front \* Less than a mile from Niffers, Blue Creek Marina, & Singletons Service Center \* Less than two miles from Stillwaters Golf Course and Harbor Point Marina \* 30 minutes from Auburn \* 50 minutes from Montgomery \* 2 hours from Atlanta and Birmingham

**TERRAIN:** Stunning Hardwood Bottoms and rolling topography with level drains boasting crystal clear creeks.

**LAND USE:** Massive virgin timber \* Recreational deer & turkey \* Development & Investment

**PRICE:** \$1,356,750

**SPECIAL FEATURES:** Rare opportunity for a recreational tract within a stone's throw from Lake Martin. Guestimating between \$1800 and \$2200 an acre of untouched hardwood and pine poles. Incredible investment opportunity to develop off water homesites. Tremendous future income and exit strategy

**Call Pete Hall at 334 312 7099 – Shown by appointment only**

This company, or any of its agents, will not be held responsible for any false or misleading information. Information is collected by agents from sources that agent deems reliable. Agent has used his best efforts and good faith to obtain reliable information.

4163 CARMICHAEL ROAD | MONTGOMERY, ALABAMA 36106 | 334.270.8400

www.JohnHallCo.com



