



JOHN HALL & COMPANY

LAND • COMMERCIAL • INVESTMENT PROPERTY

WWW.JOHNHALLCO.COM

Glassy Mill 25

25 acres +/-

Macon County, AL

okes- Parcel1 -25acres+/-
icon County, Alabama, 25 AC +/-



Boundary

 The information contained herein was obtained from sources deemed to be reliable. Land of " Services makes no warranties or guarantees as to the completeness or accuracy thereof.



LOCATION: Located along CR 22 in between Little Texas and Society Hill in Macon County, AL

LAND USE: Recreation/Hunting/ Mini Fam

PRICE: \$199,000

SPECIAL FEATURES: Offered for sale is 25 acres (+/-), located along Glassy Mill Road in Macon County. This tract features paved road frontage, power/water, potential homesite, and is fully timbered in mature hardwoods and pines.

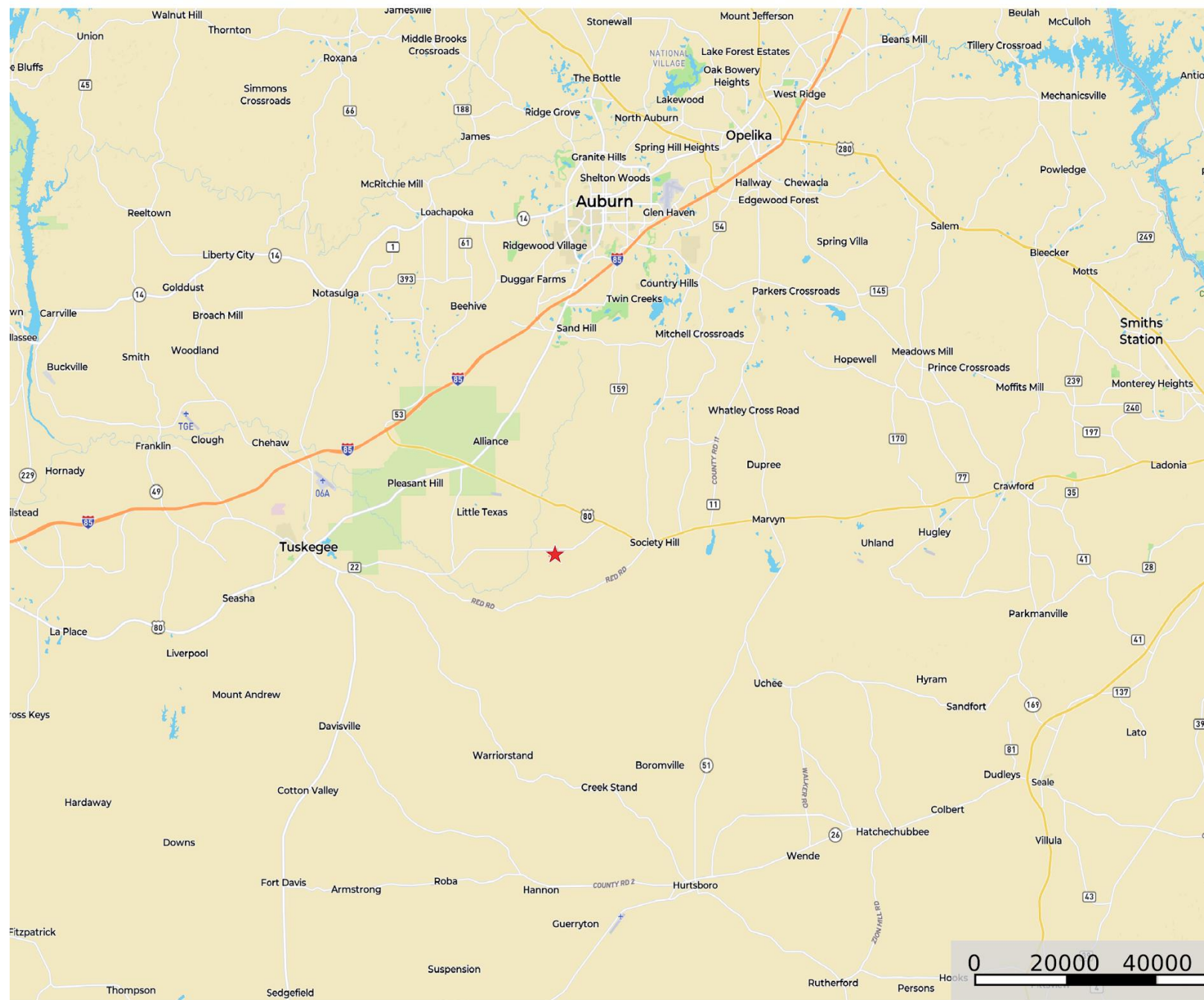
An established road system makes for easy access throughout the property, and the topography can be described as gentle to rolling. Other key features of this property include its convenience to Auburn city limits being roughly a 15 minute drive, and less than a 10 minute drive to I-85. This part of Macon county produces large white tailed deer, hard gobbling turkeys, and the opportunity to hunt hogs as well!

Whether you are looking for a nice hunting tract or a potential homesite with acreage, this property fits the bill. There is the opportunity to add additional acreage to this property, so please call the listing agent for more information. Deed restrictions and covenants do apply.

This company, or any of its agents, will not be held responsible for any false or misleading information. Information is collected by agents from sources that agent deems reliable. Agent has used his best efforts and good faith to obtain reliable information.

4163 CARMICHAEL ROAD | MONTGOMERY, ALABAMA 36106 | 334.270.8400
www.JohnHallCo.com

11 -25acres+/- Alabama, 25 AC +/-



ry

11 -25acres+/-
Alabama, 25 AC +/-

