



JOHN HALL & COMPANY

LAND • COMMERCIAL • INVESTMENT PROPERTY

WWW.JOHNHALLCO.COM

Hayden Nichols

AI Registered Forester #2407

Land Sales Agent

(205) - 799 - 1495

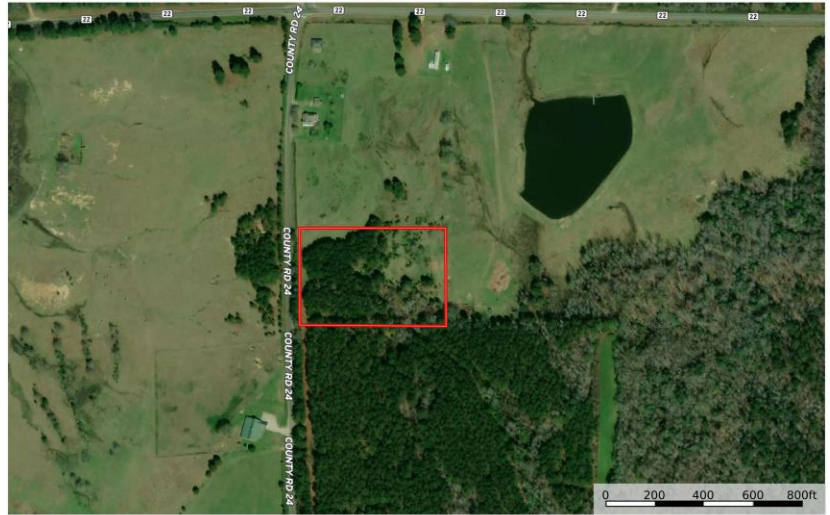
Little Texas Home Site

6 acres +/-

Macon County, AL



Stokes-Parcel5-6acres(+/-)
Macon County, Alabama, 6 AC +/-



Boundary

Hayden Nichols
1650 Club Creek Drive

The information contained herein was obtained from a public source. It is not guaranteed to be accurate. The user assumes all responsibility for any errors.

LOCATION: Located along CR 24 in between Little Texas and Society Hill in Macon County, Al

LAND USE: Mini Farm/Rural Residential/ Hunting

PRICE: \$87,000

SPECIAL FEATURES: Offered for sale is 6 acres (+/-), located along County Road 24 in Macon County. This tract features paved road frontage, power/water, potential home site, and is fully timbered in mature trees.

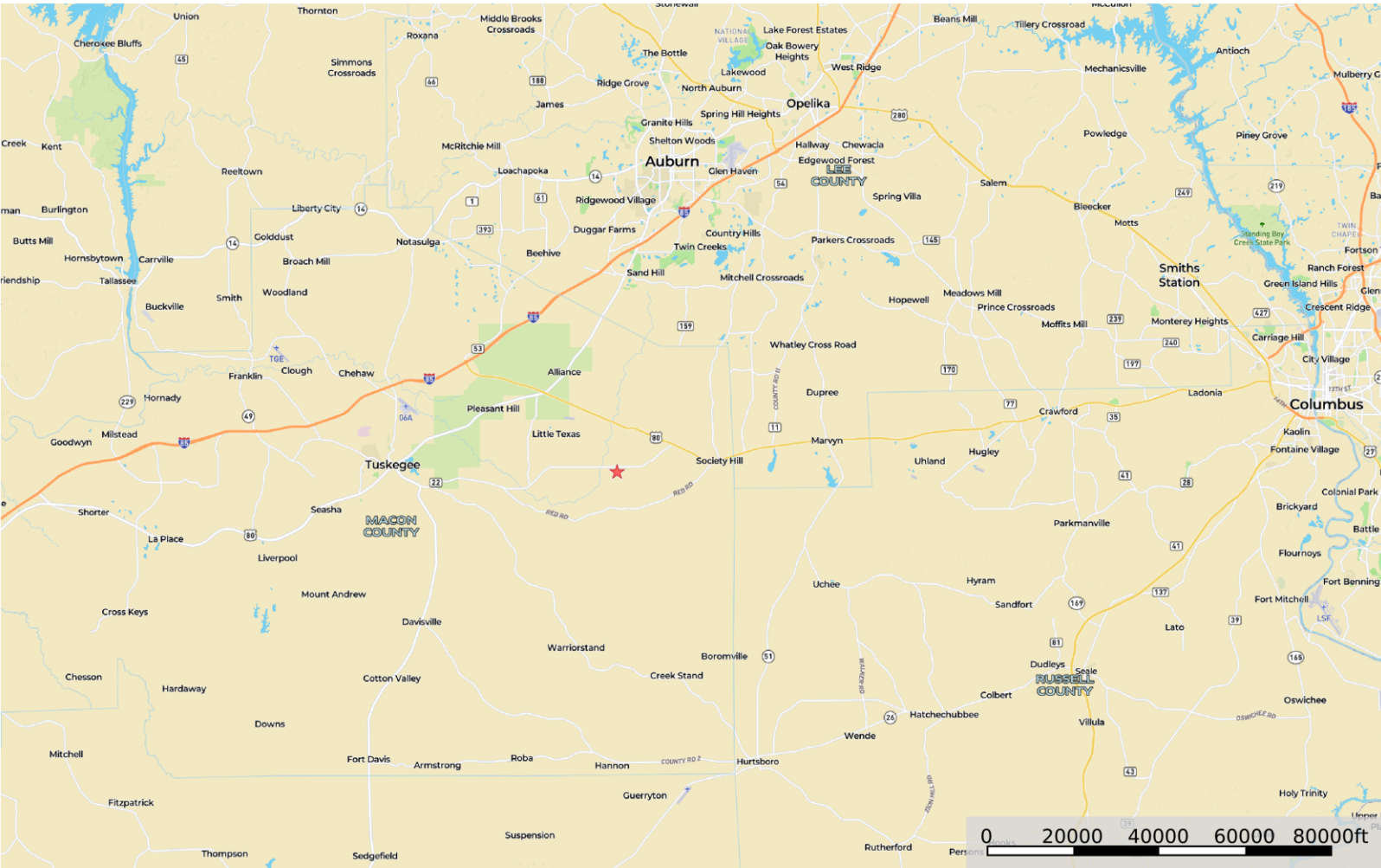
Other attributes of this property, is that it is located just 15 minutes from the city limits of Auburn, and under a 10 minute drive from Interstate-85. If you are looking for a great home site with acreage, this property is worth your interest! Additional acreage can be obtained and deed restrictions do apply to this property, please contact Hayden Nichols for more information.

This company, or any of its agents, will not be held responsible for any false or misleading information. Information is collected by agents from sources that agent deems reliable. Agent has used his best efforts and good faith to obtain reliable information.

4163 CARMICHAEL ROAD | MONTGOMERY, ALABAMA 36106 | 334.270.8400

www.JohnHallCo.com

Stokes-Parcel5-6acres (+/-) Macon County, Alabama, 6 AC +/-

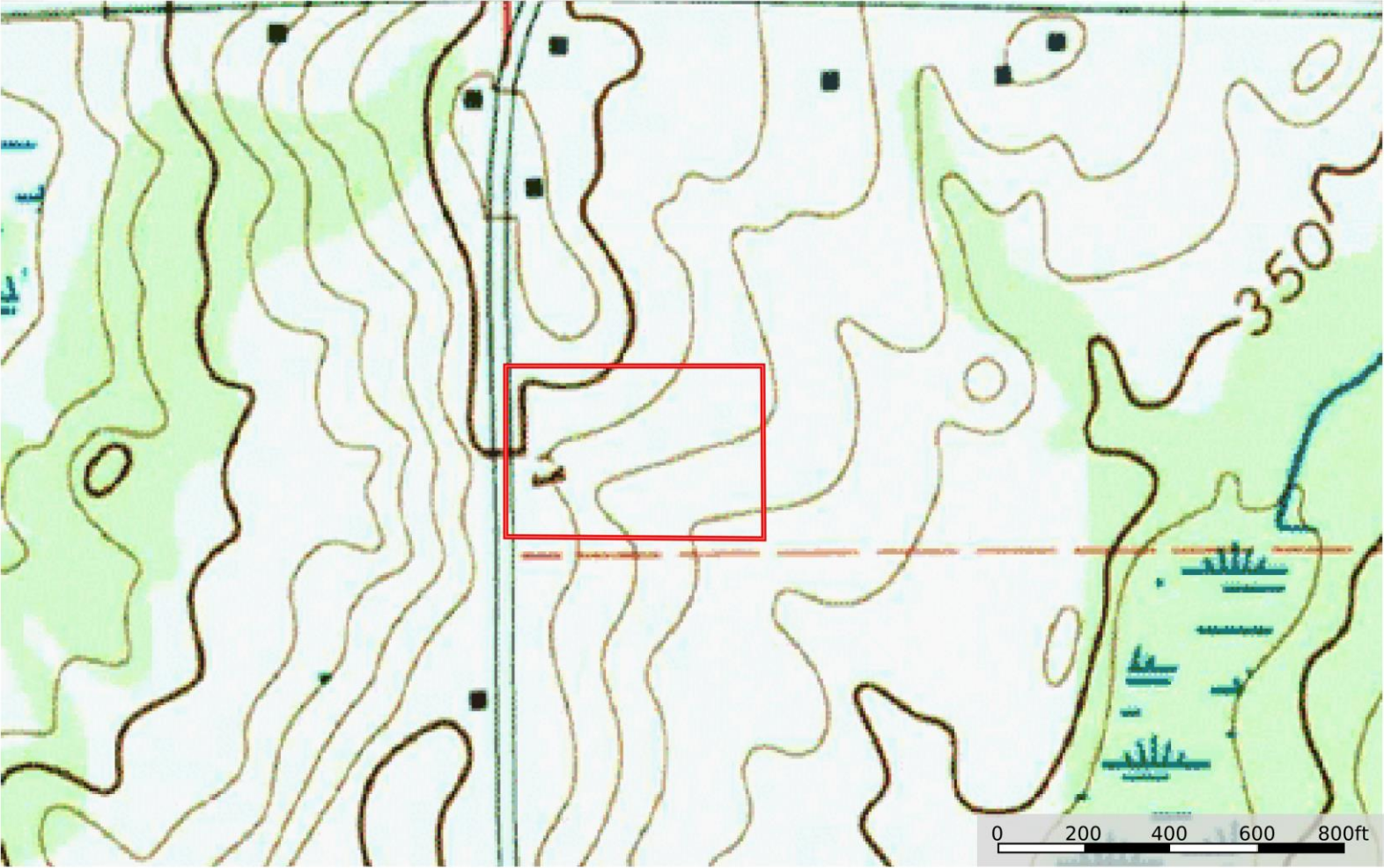


★ Location □ Boundary

Hayden Nichols
1650 Club Creek Drive


The information contained herein was obtained from sources deemed to be reliable. Land id™ Services makes no warranties or guarantees as to the completeness or accuracy thereof.

Stokes-Parcel5-6acres(+/-)
Macon County, Alabama, 6 AC +/-



 Boundary

Hayden Nichols
1650 Club Creek Drive

 The information contained herein was obtained from sources deemed to be reliable. Land id™ Services makes no warranties or guarantees as to the completeness or accuracy thereof.



