



# John Hall & Company

Land | Commercial | Investment Property  
www.JohnHallCo.com

Hoke Smith

334.322.2683

hoke@johnhallco.com

## Honey Pines

130 +/- acres  
Barbour County  
Midway, AL



**LOCATION:** 1546 State Route 51 N. Midway, Alabama 36053

**TERRAIN:** Rolling

**ACRES:** 130 +/-

**LAND USE:** Recreational / Timber Investment

**PRICE:** \$695,000

**AGENT:** Hoke Smith, 334.322.2683, hoke@johnhallco.com

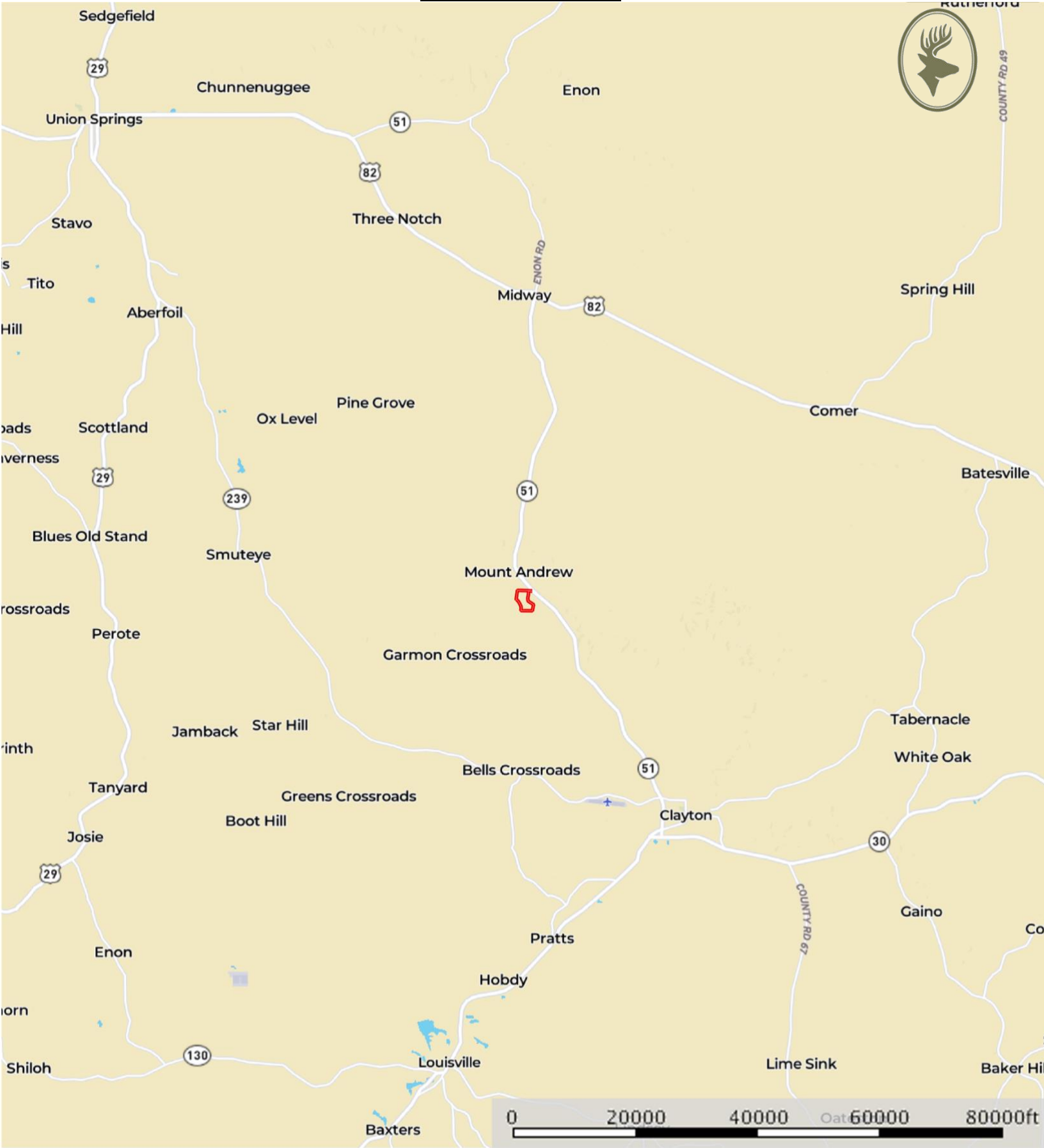
**SPECIAL FEATURES:** Looking for an incredible hunting and recreational retreat? Here it is! 130 +/- acres near Midway, AL with a 1,140-sq. ft. cabin and a 24' x 36' barn all built in 2019. There is about 100 +/- acres of planted pines in various ages but the majority being 25 + years old and thinned twice. There are 3 food plots that range from 0.75 – 1.5 acres +/- . Each food plot's perimeter is lined with sawtooth oaks (17 -20 years old), persimmon trees, and crab apple trees. There was a total of 150 hard and soft mast trees planted along with recently an orchard being planted filled with fruit bearing trees. The timber has been on a prescribed burn program providing great forage and cover for the deer and turkeys along with quality timber. The property has a great road system which traverses throughout the whole property providing accessibility to every portion. The pond on the property is about 1.5 acres +/- with a wooden pier. The deer and turkey populations are amazing. Spend a fall afternoon afield quail hunting in the piney woods or sitting in the deer stand. If you don't feel like going hunting, then no problem! Spend time with family and friends around the cabin and fire pit cooking out and watching football games! Odds are you will have just as many deer in the yard as the hunters who are out in the field. Barbour County WMA is just across Hwy 51 which offers over 7,000 acres of quality public hunting. This property is 30 minutes to Eufaula, 1 hour to Montgomery, Auburn, Columbus, and just over an hour to Dothan, AL. Don't miss this opportunity on a chance to own this amazing piece of property.

This company, or any of its agents, will not be held responsible for any false or misleading information. Information is collected by agents from sources that agent deems reliable. Agent has used his best efforts and good faith to obtain reliable information.

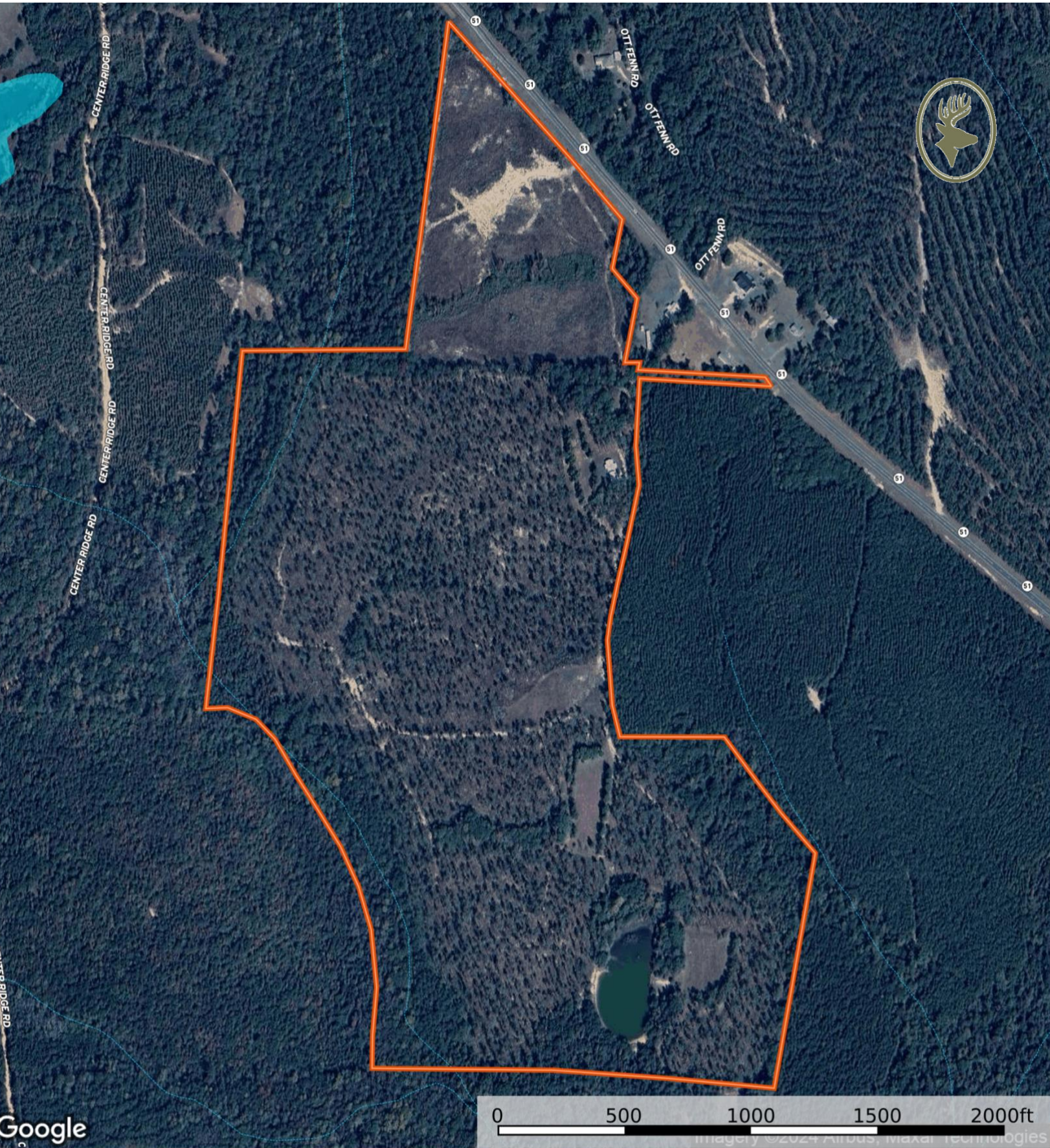
4163 CARMICHAEL ROAD | MONTGOMERY, ALABAMA 36106 | 334.270.8400

www.JohnHallCo.com

Property Location

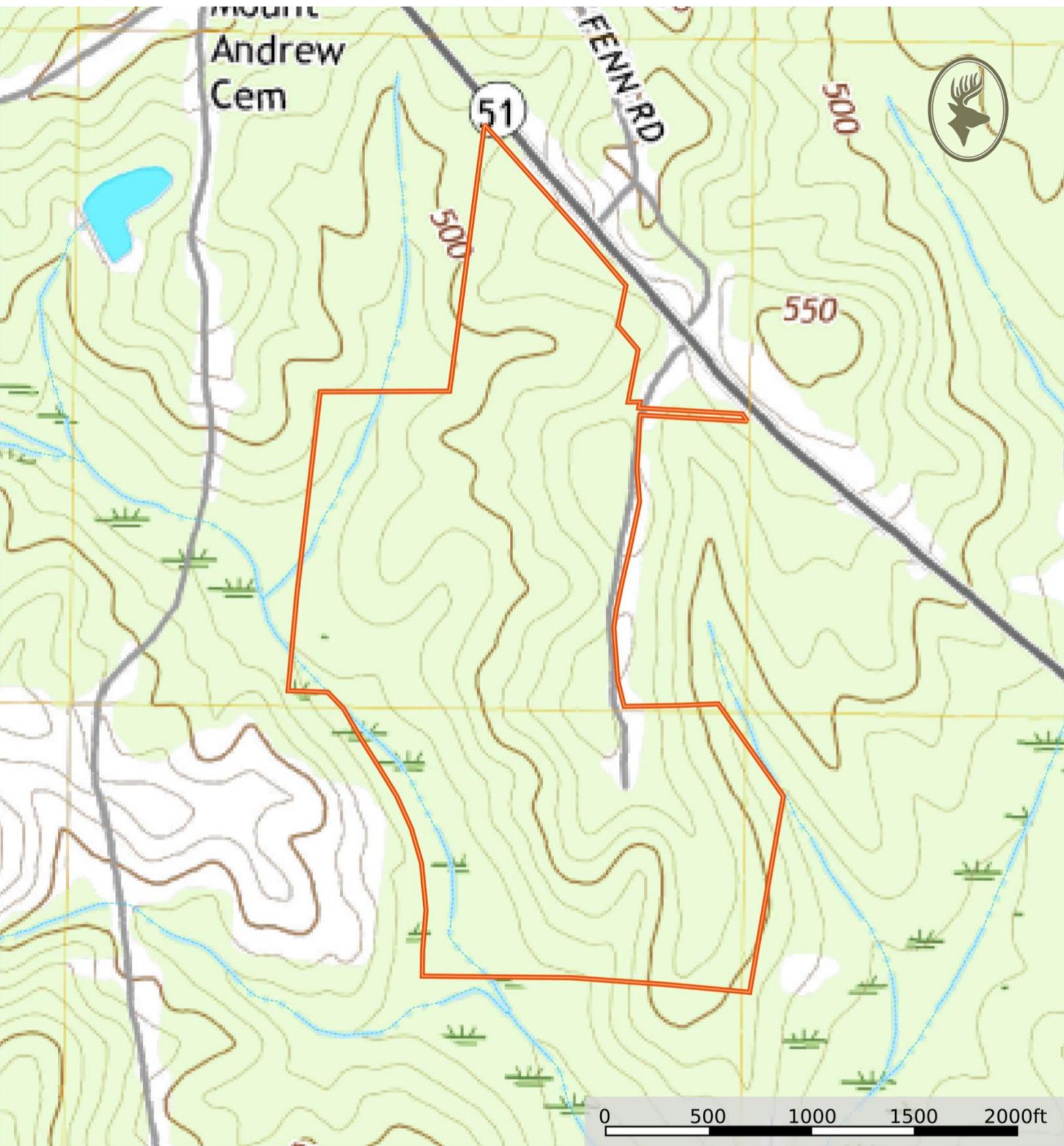






Boundary Stream, Intermittent River/Creek Water Body





Boundary Stream, Intermittent River/Creek Water Body



















