



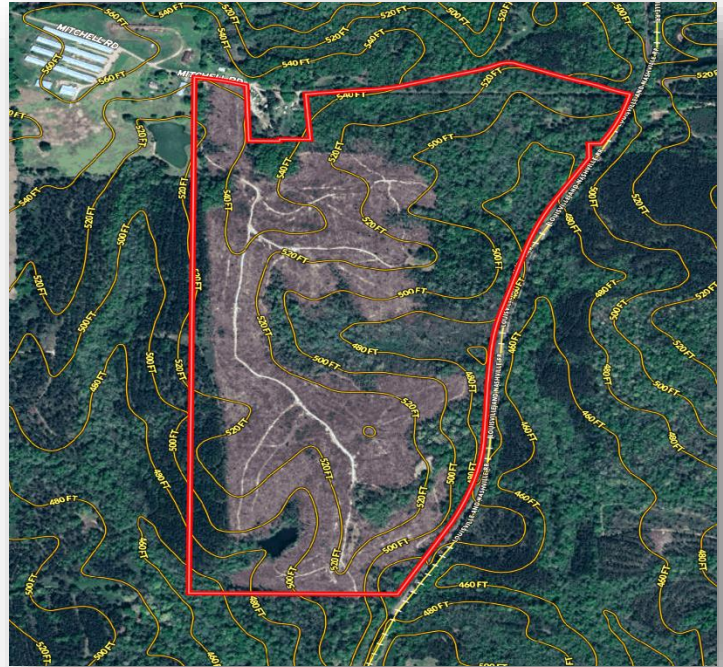
JOHN HALL & COMPANY

LAND • COMMERCIAL • INVESTMENT PROPERTY

WWW.JOHNHALLCO.COM

Porterfield Farms

213 acres +/-
Butler County



LOCATION: Butler County – 3.75 miles from Greenville – 1.85 miles from Ft Deposit – 7 miles from Robert Trent Jones Cambrian Ridge golf course – Access from Mitchell Rd

TERRAIN: Beautiful rolling terrain from 480 ft to 540 ft. About 100 acres of pines were clear cut last year with the remainder in old growth Hardwoods adding substantial timber value. Come in and design your ideal hunting plantation! Loaded with deer and turkey with several small wood duck holes, several locations suitable to plant a dove field, a well-maintained internal road system, and a small pond.

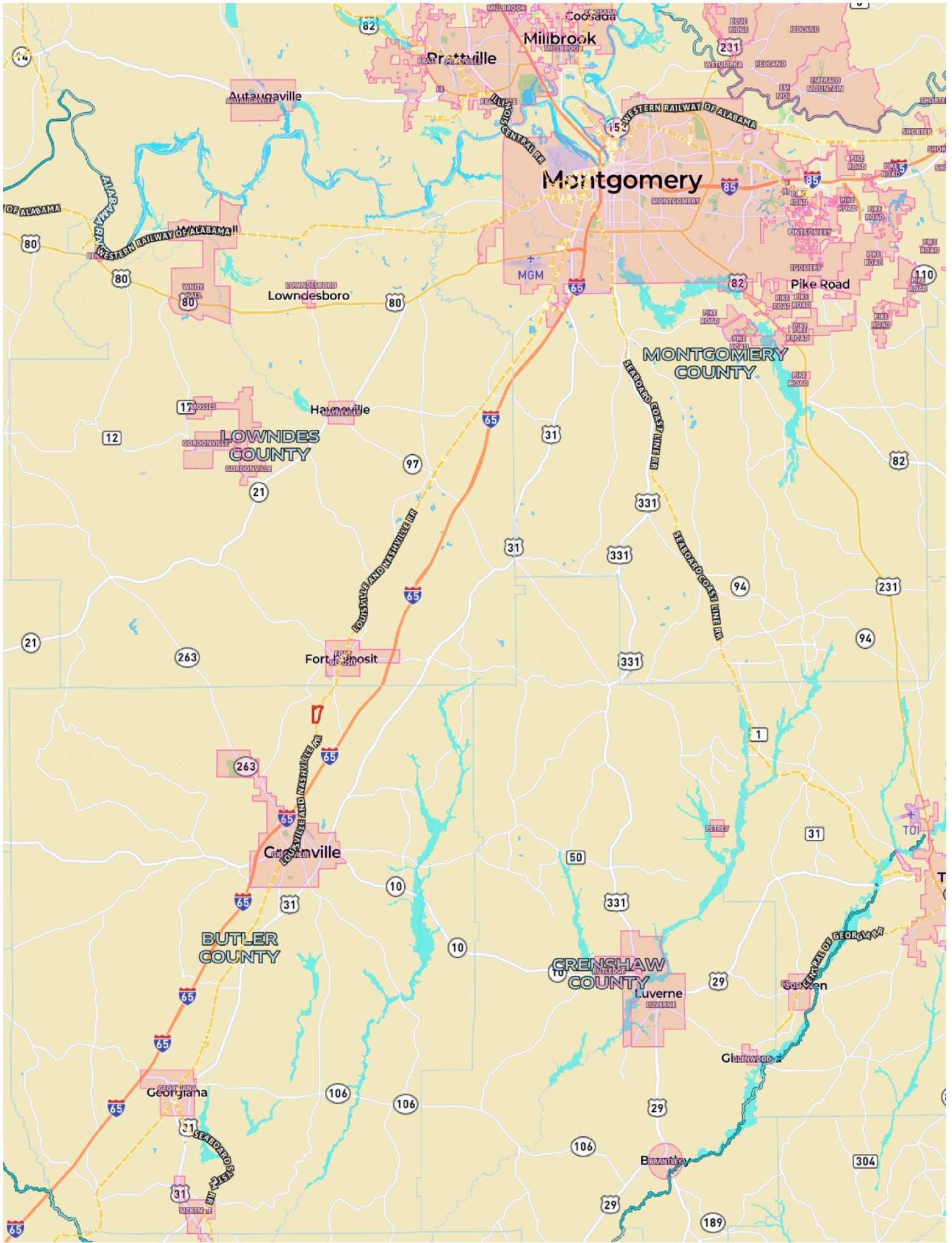
LAND USE: Recreational deer, turkey, duck and dove – Timber Investment – Option to replant in pines or make large fields for hay or other agriculture. There are several large lake sites on property.

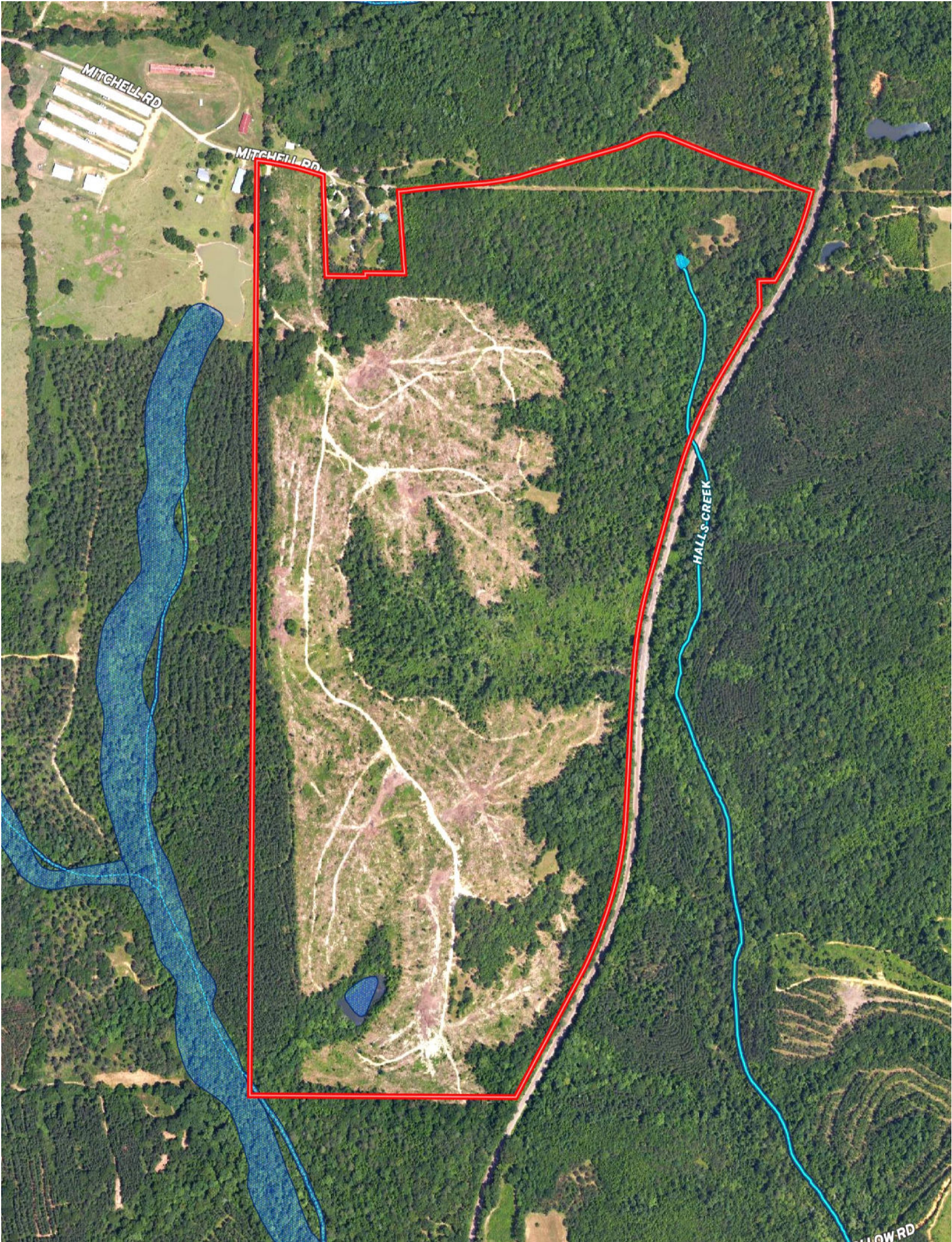
PRICE: \$521,850 or \$2,450 per acre

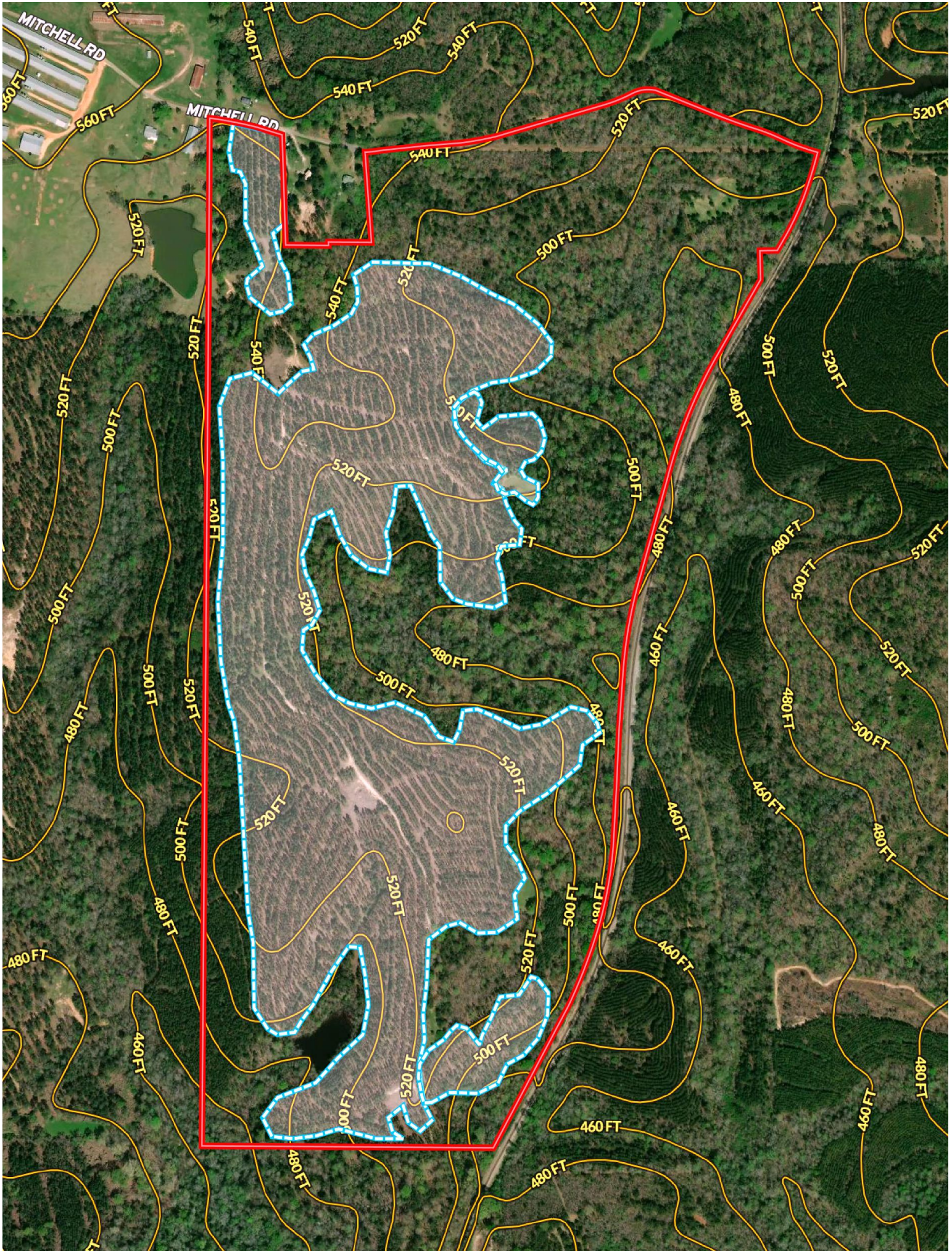
Call Pete Hall at (334) 312 7099 to view the property

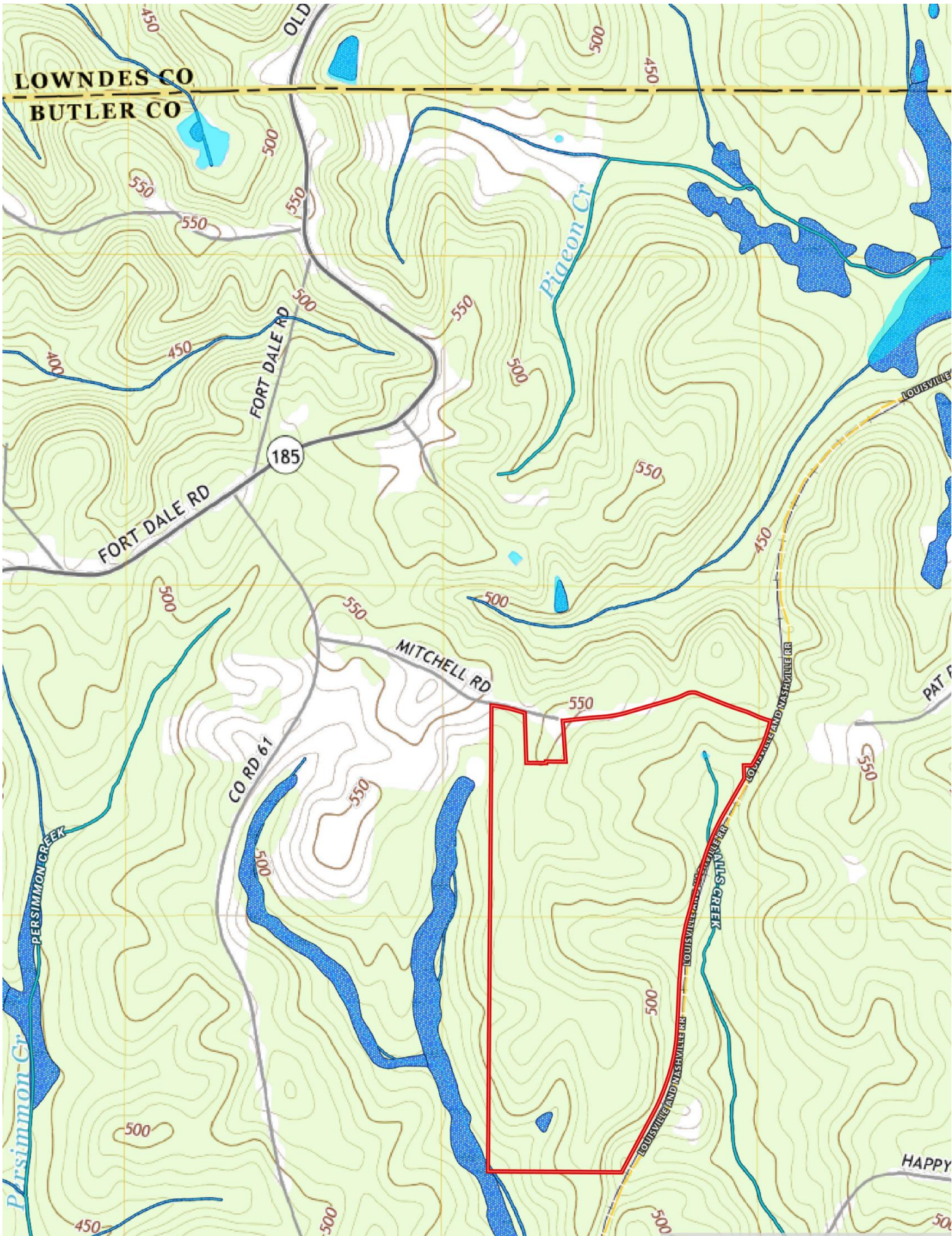
This company, or any of its agents, will not be held responsible for any false or misleading information. Information is collected by agents from sources that agent deems reliable. Agent has used his best efforts and good faith to obtain reliable information.

4163 CARMICHAEL ROAD | MONTGOMERY, ALABAMA 36106 | 334.270.8400
www.JohnHallCo.com









LOWNDES CO
BUTLER CO

FORT DALE RD
185

MITCHELL RD

CO RD 61

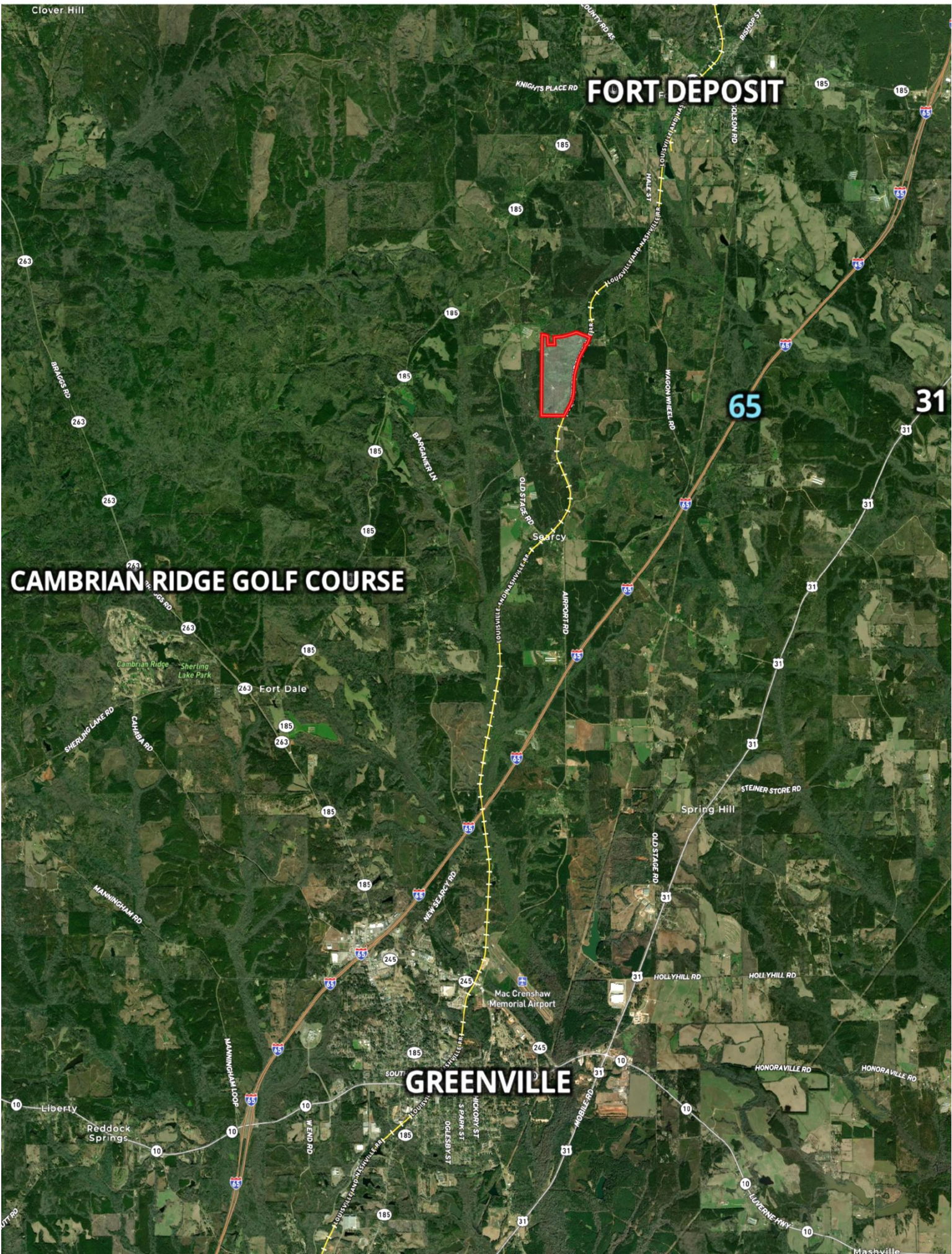
Pigeon Cr

Persimmon Cr

HILLS CREEK

LOUISVILLE AND NASHVILLE RR

HAPPY



FORT DEPOSIT

CAMBRIAN RIDGE GOLF COURSE

GREENVILLE



Searcy

Mac Crenshaw Memorial Airport

65

31

263

185

185

185

185

185

185

185

185

185

185

185

185

185

185

185

185

263

263

263

263

263

263

263

263

263

263

263

263

263

263

263

263

263

263

263

263

263

263

185

185

185

185

185

185

185

185

185

185

185

10

10

10

10

10

10

10

10

10

10

10

10

10

10

10

10

10

10

10

10

10

10

