



John Hall & Company

Land | Commercial | Investment Property
www.JohnHallCo.com

Pete Hall
334.312.7099
pete@johnhallco.com

Trinity Property 32.5 ACRES Russell Co, Al



LOCATION: Holy Trinity in SE Russell County – just off CR 165

LAND USE: Recreation/ Timber/ Investment

PRICE: \$4200 per acre - \$136,500.00 or \$4200 per acre

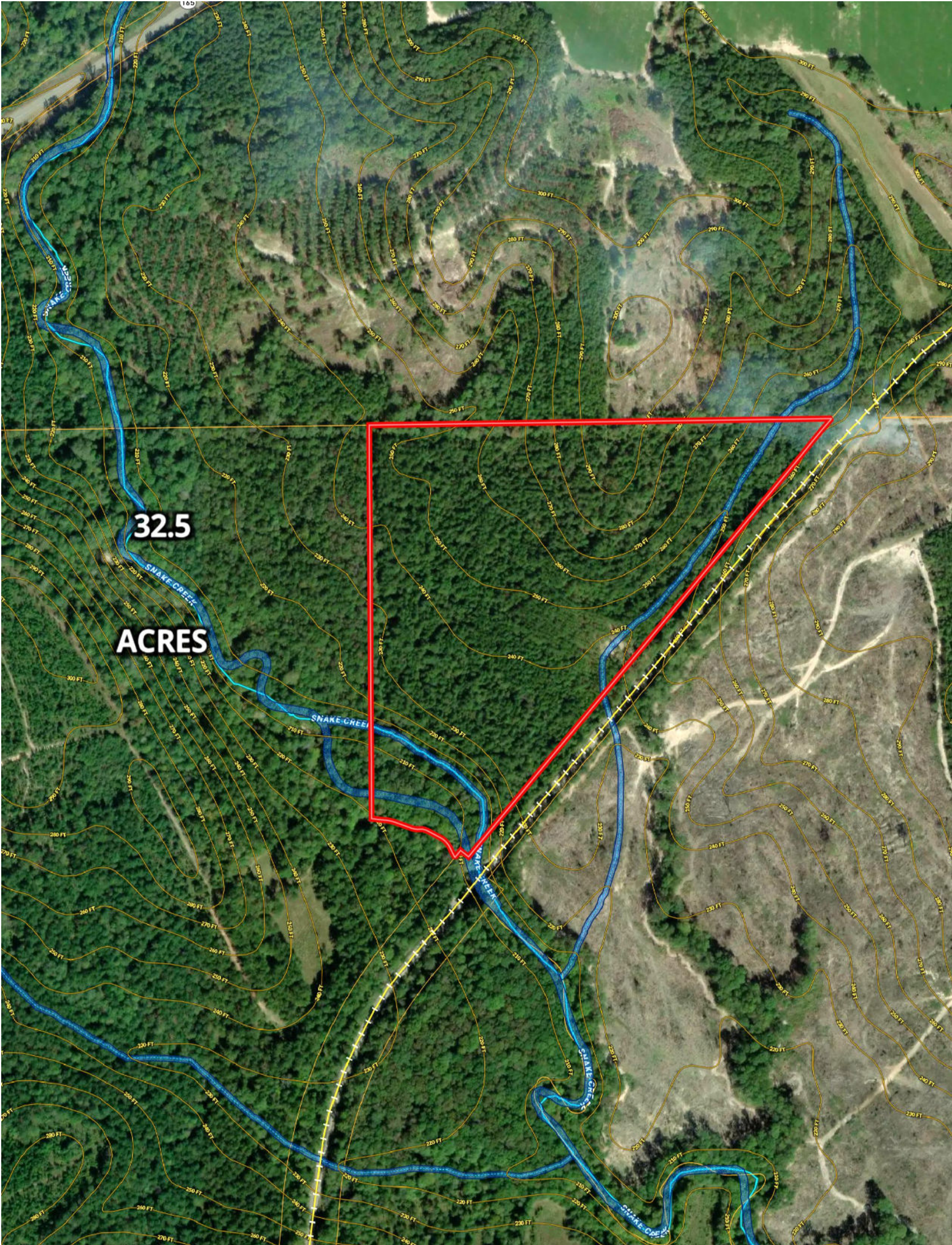
SPECIAL FEATURES: Stunning 32.5 acre parcel being offered for the first time in over 100 years!

Call Pete Hall at 334 312 7099

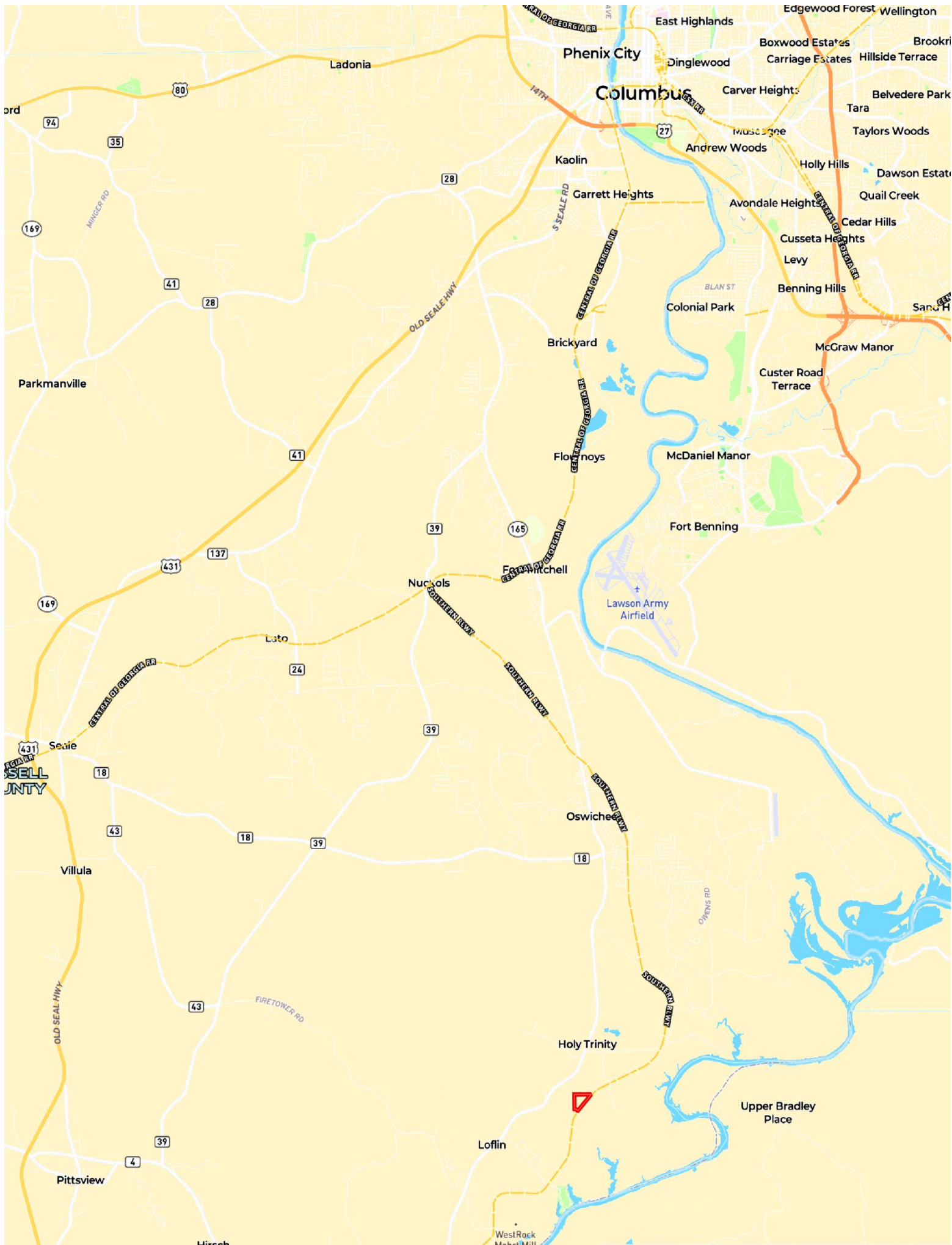
This company, or any of its agents, will not be held responsible for any false or misleading information. Information is collected by agents from sources that agent deems reliable. Agent has used his best efforts and good faith to obtain reliable information.

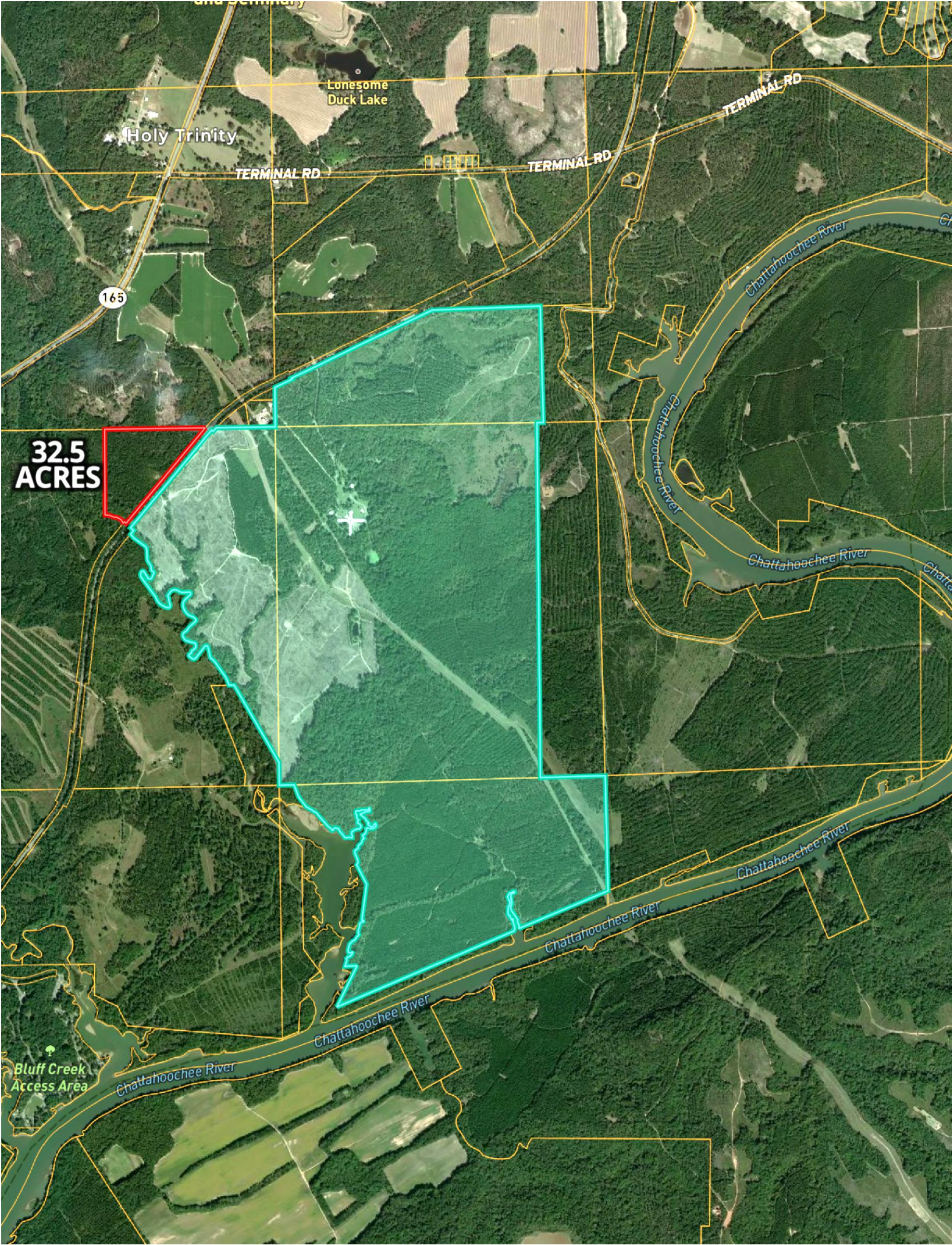
4163 CARMICHAEL ROAD | MONTGOMERY, ALABAMA 36106 | 334.270.8400
www.JohnHallCo.com





32.5
ACRES





**32.5
ACRES**

165

Holy Trinity

Lonesome
Duck Lake

TERMINAL RD

TERMINAL RD

TERMINAL RD

Chattahoochee River

Chattahoochee River

Chattahoochee River

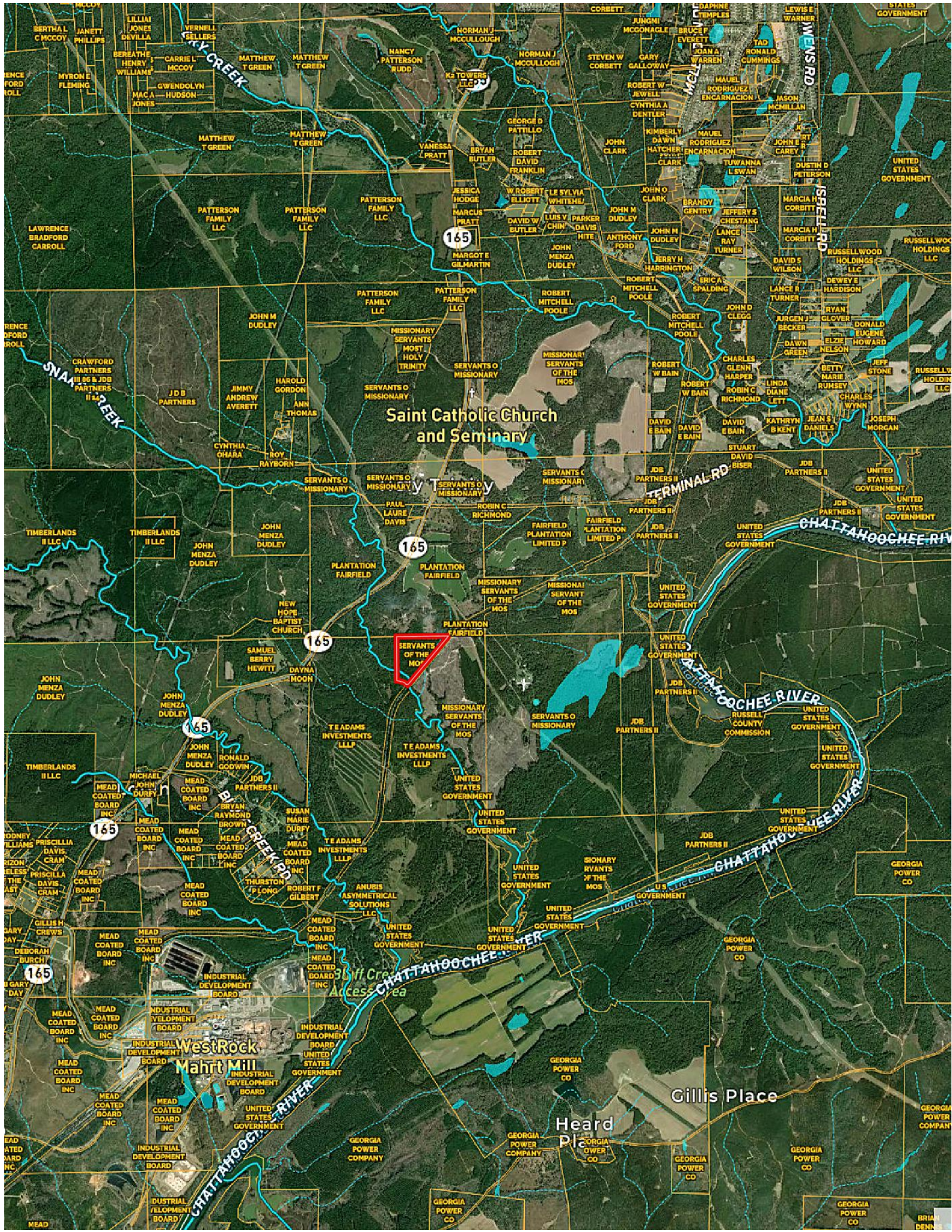
Chattahoochee River

Chattahoochee River

Chattahoochee River

Chattahoochee River

Bluff Creek
Access Area



Saint Catholic Church and Seminary

Servants of the Mos

**WestRock
Maht Mill**

Gillis Place

Heard Place

KELLY CREEK

SNAIL CREEK

CHATAHOOCHEE RIVER

CHATAHOOCHEE RIVER

CHATAHOOCHEE RIVER

CHATAHOOCHEE RIVER

CHATAHOOCHEE RIVER

165

165

165

165

165

165

165

K2 TOWERS LLC

Servants of the Mos

TE ADAMS INVESTMENTS LLLP

Mead Coated Board Inc

Mead Coated Board Inc

Mead Coated Board Inc

Patterson Family LLC

Missionary Servants of the Mos

Servants of the Mos

Plantation Fairfield

Missionary Servants of the Mos

United States Government

United States Government

United States Government

United States Government

United States Government

United States Government

United States Government

United States Government

United States Government

United States Government

United States Government

United States Government

United States Government

United States Government

United States Government

United States Government

United States Government

United States Government

United States Government

United States Government

United States Government

United States Government

United States Government

United States Government

United States Government

United States Government

United States Government

United States Government

United States Government

United States Government

United States Government

United States Government

United States Government

United States Government

United States Government

United States Government

United States Government

United States Government

United States Government

United States Government