



# John Hall & Company

Land | Commercial | Investment Property  
[www.JohnHallCo.com](http://www.JohnHallCo.com)

Hoke Smith

334.322.2683

[hoke@johnhallco.com](mailto:hoke@johnhallco.com)

## Indian Hill Tract

52 +/- acres

Prattville, AL

Autauga County



**LOCATION:** Indian Hill Rd. Prattville, AL. 36067 Autauga County

**TERRAIN:** Rolling / Hilly

**ACRES:** 52 +/-

**LAND USE:** Recreational / Home-site

**PRICE:** \$275,000

**AGENT:** Hoke Smith, 334.322.2683, [hoke@johnhallco.com](mailto:hoke@johnhallco.com)

**SPECIAL FEATURES:** 52± Acres on Indian Hill Road – Minutes from Downtown Prattville

Discover the perfect blend of seclusion and convenience with this 52± acre property located just minutes from downtown Prattville. Featuring a mix of open land and mature hardwood timber, this tract offers multiple ideal homesites, making it an excellent opportunity for a custom home or multi-family retreat. Enjoy outdoor living with a shared 3.5± acre pond, perfect for fishing, as well as opportunities for hunting, trail riding, and more. The property includes two access points from Indian Hill Road and a shared drive along the western boundary. Utilities are available, enhancing the property's readiness for development. A rare find with endless potential in a prime location.

Contact Hoke Smith for more info or to schedule a showing. 334.322.2683 or [hoke@johnhallco.com](mailto:hoke@johnhallco.com).

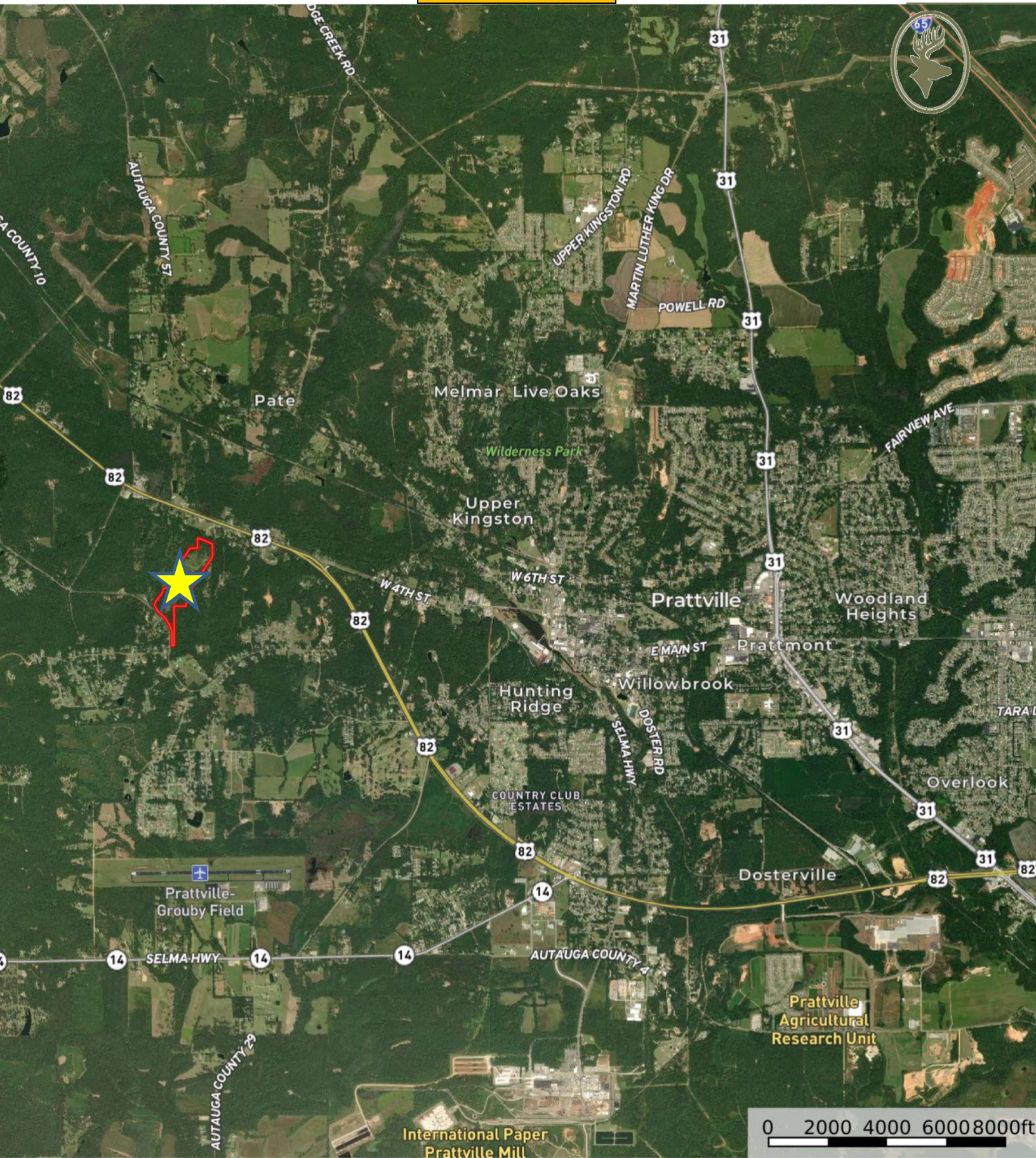
This company, or any of its agents, will not be held responsible for any false or misleading information. Information is collected by agents from sources that agent deems reliable. Agent has used his best efforts and good faith to obtain reliable information.

4163 CARMICHAEL ROAD | MONTGOMERY, ALABAMA 36106 | 334.270.8400

[www.JohnHallCo.com](http://www.JohnHallCo.com)



Property Location











MOUNTAIN VIEW

0 200 400 600 800ft

 Boundary



