



JOHN HALL & COMPANY

LAND • COMMERCIAL • INVESTMENT PROPERTY

WWW.JOHNHALLCO.COM

Clark Gray

334.391.9249

Clark@johnhallco.com

County Road 21 Home-Site

33 +/- Acres

Autauga County



LOCATION: 0 County Road 21, Prattville, AL, 36067

LAND USE: Rural Residential / Recreation

PRICE: \$175,000

Description: This 33+/- acre tract offers the perfect blend of privacy and convenience just outside of Prattville. The property is fully wooded with a mixture of hardwoods and pines, creating a peaceful natural setting ideal for recreation, hunting, or a secluded home site. With no restrictions, the land provides endless opportunities- whether you are looking to build, enjoy outdoor activities, or simply invest in acreage. Its location near Prattville allows you to enjoy the quietness of the countryside while being a short drive to town, schools, shopping, and dining. For inquiries or to schedule a viewing, please contact me today at 334-391-9249.

This company, or any of its agents, will not be held responsible for any false or misleading information. Information is collected by agents from sources that agent deems reliable. Agent has used his best efforts and good faith to obtain reliable information.

4163 CARMICHAEL ROAD | MONTGOMERY, ALABAMA 36106 | 334.270.8400

www.JohnHallCo.com





Cimis 33+/- AC Co Rd 21
Autauga County, Alabama, AC +/-

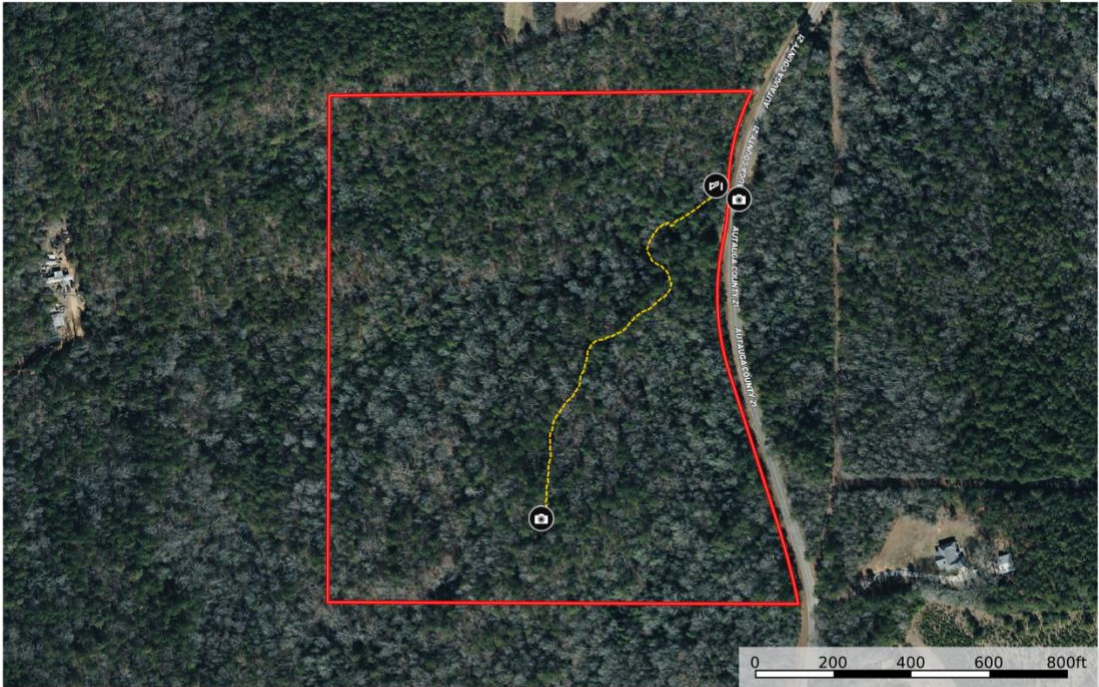
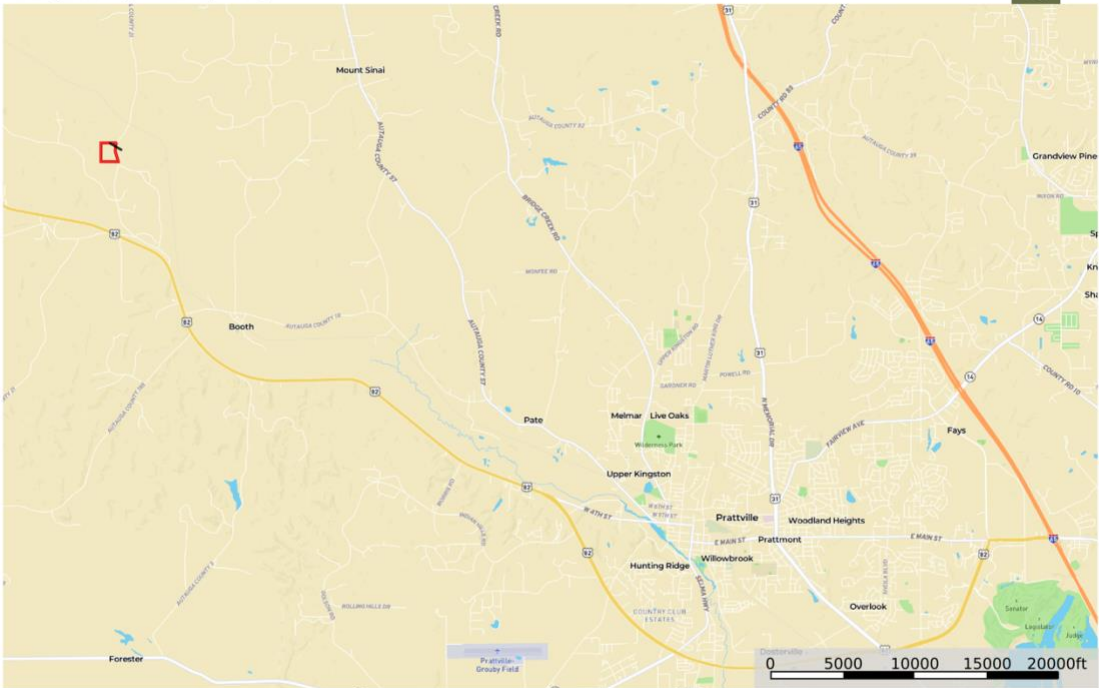


Photo Point Gate Road / Trail Boundary

Clark Gray
P: 334-391-9249

The information contained herein was obtained from sources deemed to be reliable. Land id™ Services makes no warranties or guarantees as to the completeness or accuracy thereof.

Cimis 33+/- AC Co Rd 21
Autauga County, Alabama, AC +/-



Boundary

Clark Gray
P: 334-391-9249

The information contained herein was obtained from sources deemed to be reliable. Land id™ Services makes no warranties or guarantees as to the completeness or accuracy thereof.